



38/316 Pacific Highway LANE COVE, NSW

2

2

1

City Skyline

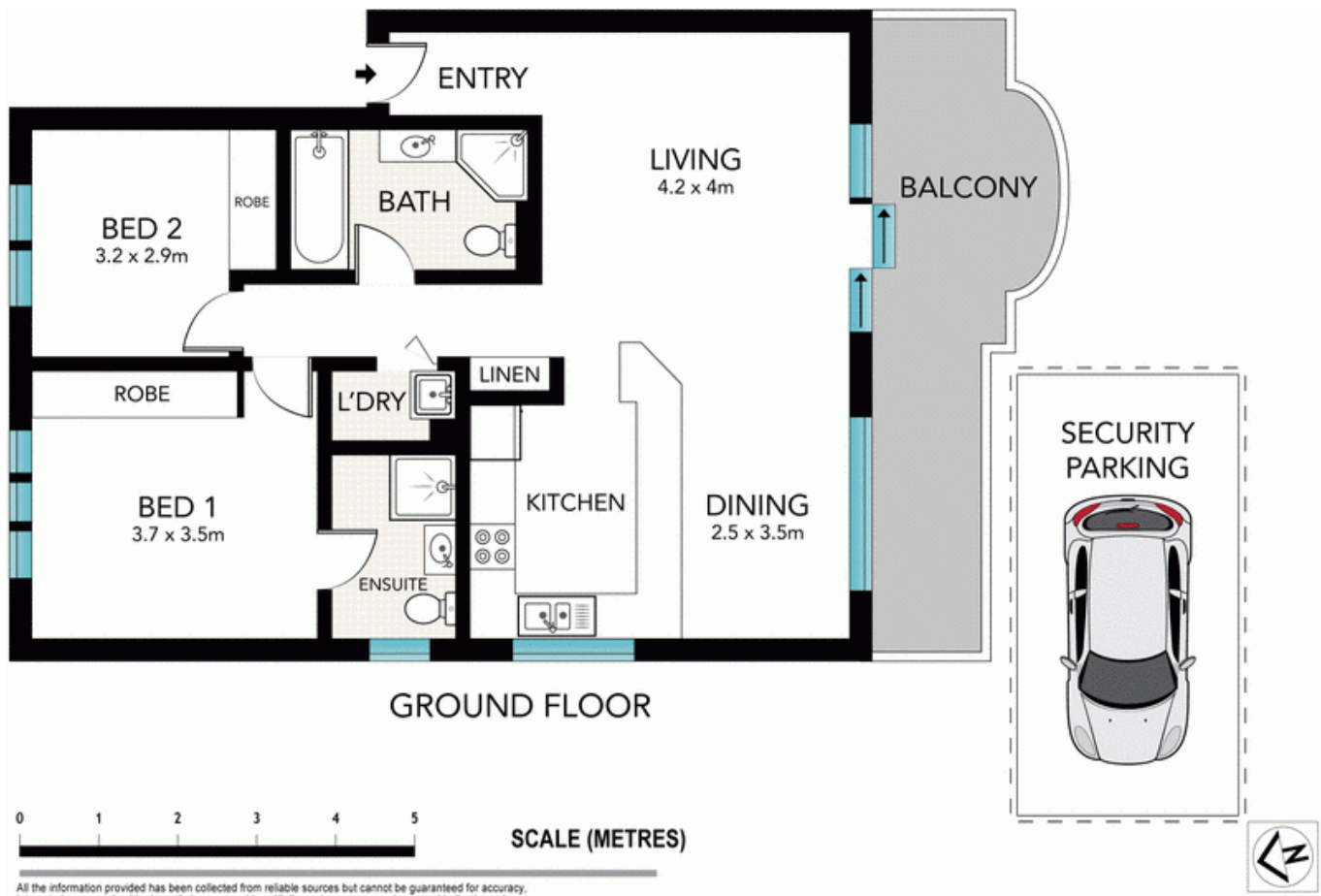
Large renovated security unit with city skyline views to Olympic Park. Situated in a modern security block with double glazed windows and an enormous entertaining balcony.

Price:

Contact Agent

Stone Lane Cove

(02) 9427 7466



All the information provided has been collected from reliable sources but cannot be guaranteed for accuracy. Interested persons should rely on their own enquiries. All dimensions are approximate and indicative only.

38/316 PACIFIC HIGHWAY, LANE COVE

