

8/58 Epping Road LANE COVE, NSW

2

1

### Top floor position with smart modern appeal

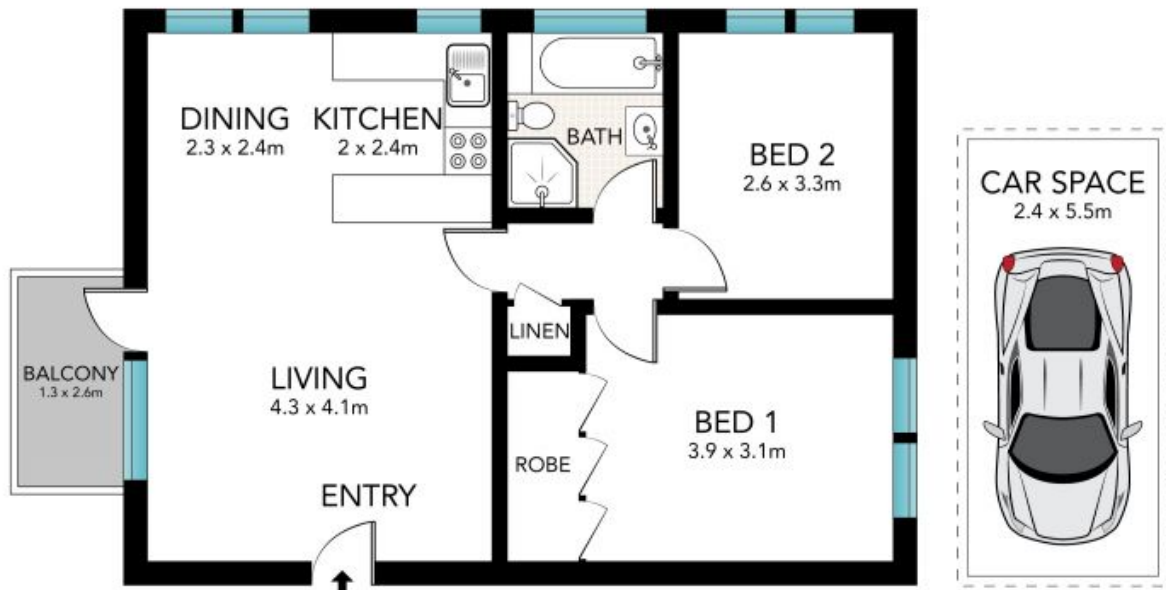
An ideal investment property or a value-packed first home, this top floor apartment comes with the added advantage of a tasteful makeover that gives it a fresh modern feel. It is presented in excellent condition and ideally located close to all amenities.

Price:

Contact Agent

**Stone Lane Cove**

(02) 9427 7466



SECOND FLOOR



SCALE (METRES)

All the information provided has been collected from reliable sources but cannot be guaranteed for accuracy. Interested persons should rely on their own enquiries. All dimensions are approximate and indicative only.



8/58 EPPING ROAD, LANE COVE