



53 Abingdon Road ROSEVILLE, NSW

3  2  1 

Countless opportunities

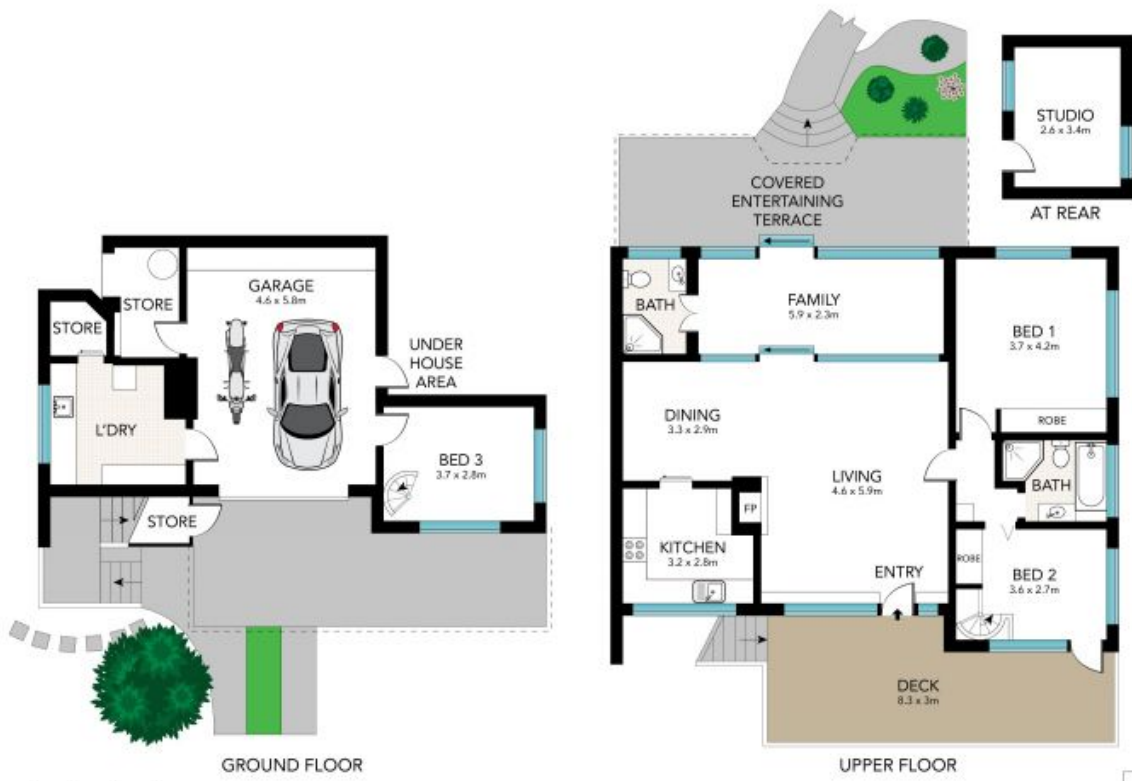
Positioned on the high side of the street, nestled on a generous 960sqm north to rear block, this full brick home offers a rare entry level opportunity to settle into this highly sought-after location.

Price: \$1,425,000 - \$1,525,000



Jill Henry

0416 493 555



SCALE (METRES)

All the information provided has been collected from reliable sources but cannot be guaranteed for accuracy. Interested persons should rely on their own enquiries. All dimensions are approximate and indicative only.



53 ABINGDON ROAD, ROSEVILLE