

23 Russell Avenue Lindfield, NSW

4

2

3

Character home in prized location

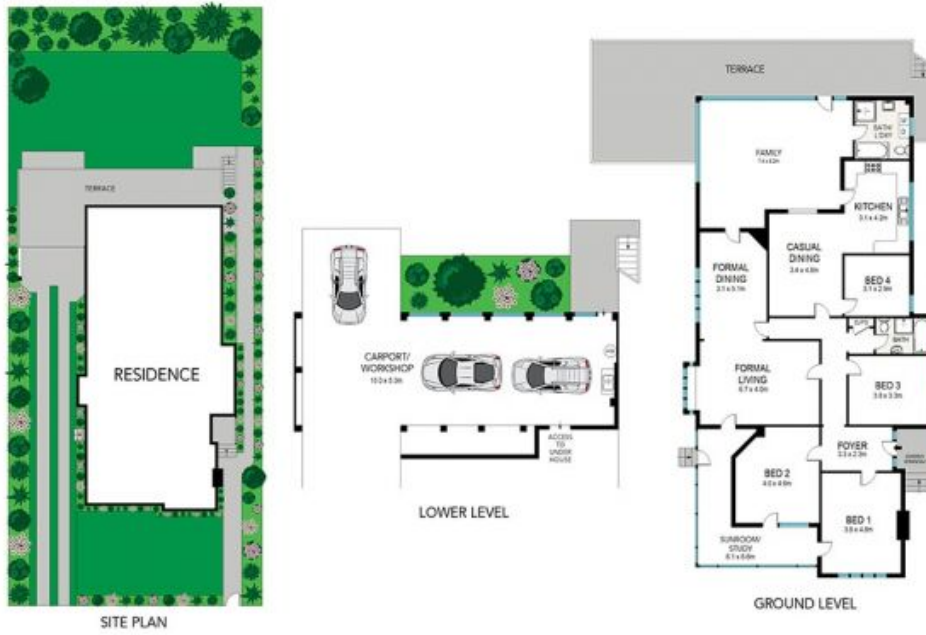
Showcasing character-filled interiors in immaculate condition, this double brick family residence is as quiet as it is convenient. The home offers an abundance of living spaces and natural light. A short level walk to shops, cafes and railway.

Price: \$3,153,000



Steven Kourdis

0402 555 675



0 1 2 3 4 5 6 7 8 9 10 SCALE METRES

All the information provided has been collected from reliable sources but cannot be guaranteed for accuracy, interested persons should rely on their own enquiries. All dimensions are approximate and indicative only.



23 RUSSELL AVENUE, LINDFIELD