



1/59 Lauderdale Avenue FAIRLIGHT, NSW 3 2 2

Ideally positioned on waterfront reserve on the Harbour Walk

Designed by internationally renowned Ian Moore architects, this substantial new town-home combines sleek cutting-edge design with every conceivable extra. Set against inspiring harbour views through Sydney Heads to the horizon, it is unsurpassed in every respect.

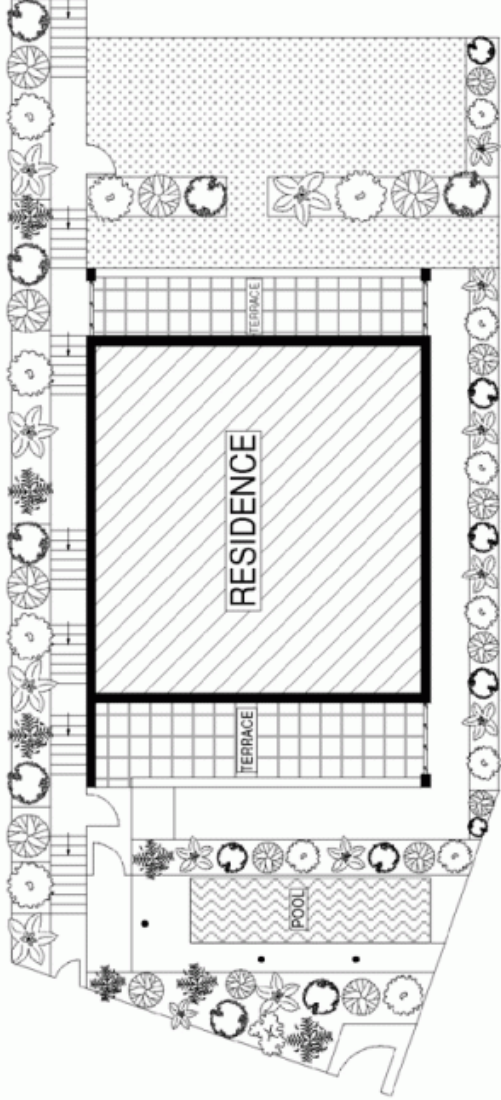
- Ideally positioned on waterfront reserve on the Harbour Walk
- Stroll to Manly Wharf and beaches without crossing a road
- Dual level residence with four vast living spaces
- Seamless flow to large harbourside entertainers' terraces
- Fully integrated open plan Corian kitchen, Miele appliances
- Clever design radiates natural light and ensures privacy
- Sparkling salt water pool, two extensive northerly terraces
- Heated tiled flooring throughout, video intercom, security
- Ducted air conditioning, C-bus home automation system
- Double security parking, internal access via private lift

Price:

Over
\$3,500,000

Stone Manly

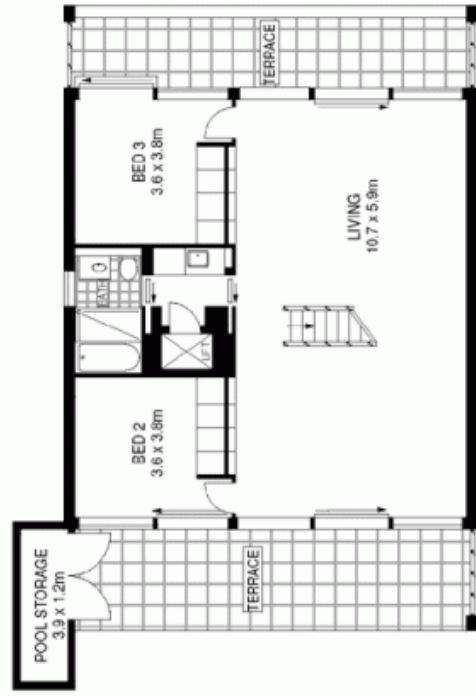
02 8962 2200



SITE PLAN (NOT TO SCALE)



LEVEL TWO



LEVEL ONE

