



ACTUAL VIEW



ACTUAL VIEW

48 Bower Street MANLY, NSW

3

3

2

Prized opportunity to acquire the ultimate lifestyle property

Anchored to the cliffs above Shelly Beach in what is unquestionably Manly's dress circle position, this magnificent architect inspired tri-level masterpiece boasts truly inspiring coastal panoramas and luxurious appointments mere footsteps from the beach.

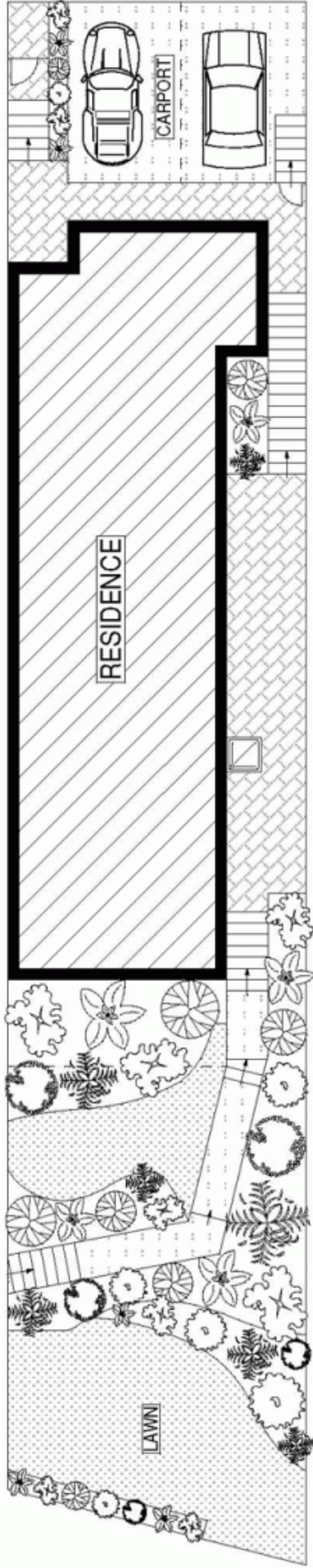
- Prized opportunity to acquire the ultimate lifestyle property
- Intimate views over Cabbage Tree Bay to Fairy Bower
- Gaze out along the length of Manly Beach to Queenscliff
- 5 year old, tri-level, giant glass walls, northerly aspect
- Expansive living space with soaring ceiling spills to deck
- Family room or fourth bedroom opens to entertainers' patio
- Stunning open plan CaesarStone kitchen, Limestone bathrooms
- Whole floor full master suite, two further double bedrooms
- 698sqm of terraced lawns and enchanting established gardens
- Double car port, Limestone and timber floors, stroll wharf

Price:

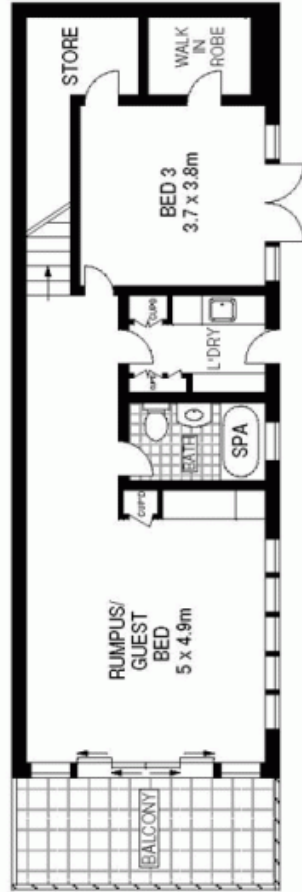
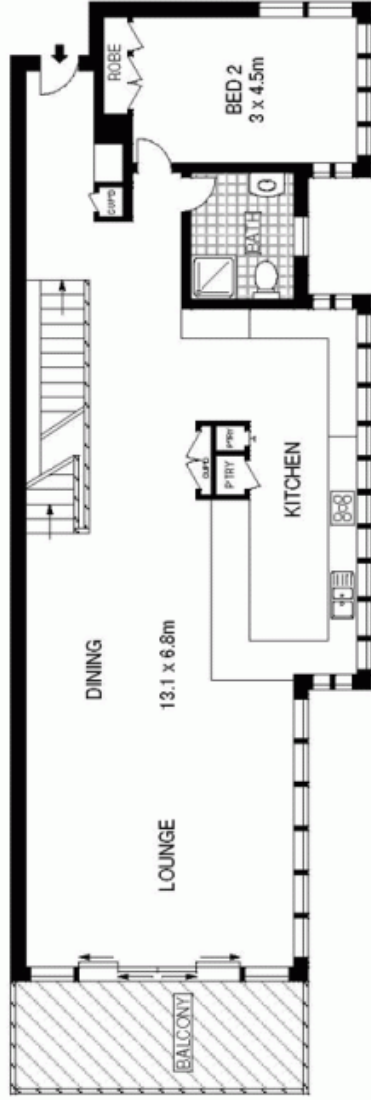
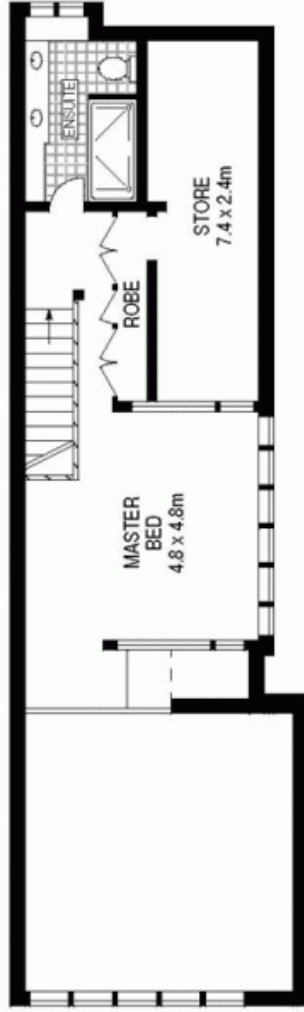
Over
\$3,500,000

Stone Manly

02 8962 2200



SITE PLAN (NOT TO SCALE)



LOWER LEVEL

ENTRY LEVEL

INT : 259m²

