

8/42A Burchmore Road MANLY VALE, NSW



Open plan lounge/dining flows to large outdoor

This stunning townhouse is perfectly nestled in a quiet street and just moments from schools, shops, beaches and transport. Enjoying impeccable styling, space and quality inclusions, this townhouse offers low maintenance living at its best.

Open plan lounge/dining flows to large outdoor

Sleek kitchen with Caesar Stone bench tops, Smeg appliances

Generous master bedroom offers ensuite, walk-in robe, study nook

Large lock up garage, storage, internal laundry with toilet

Secure outdoor area great for the kids, pets or entertaining

Set over two levels it's wonderfully bright and light-filled throughout

Private yet handy to CBD transport and popular local beaches

Full security building with video intercom and visitor parking

Perfect first home opportunity and a popular lifestyle choice

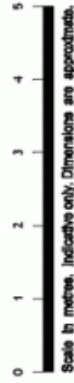
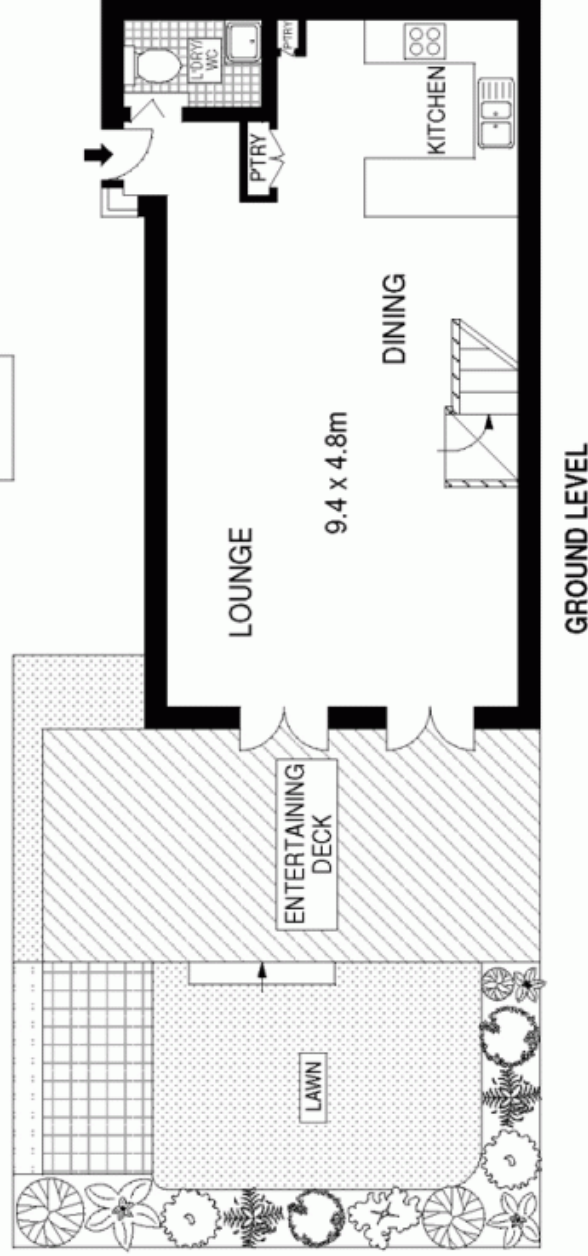
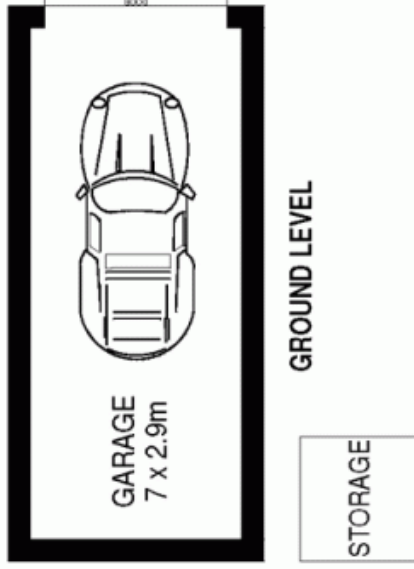
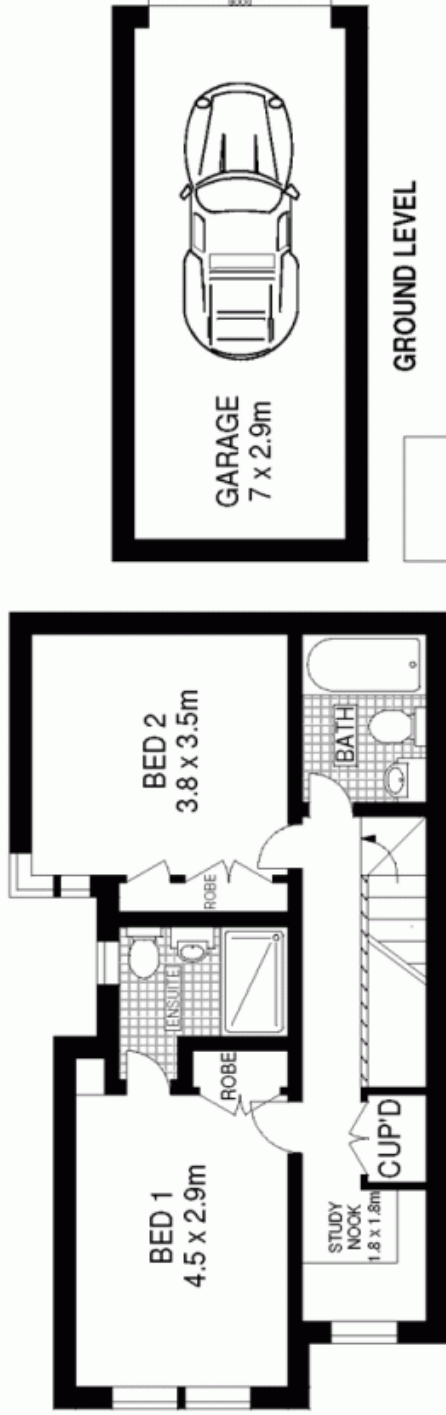
Price:

Over

\$635,000

Stone Manly

02 8962 2200



8/42A Burchmore Road, Manly Vale

McGrath