



19/132 Pacific Parade DEE WHY, NSW 2 1 2

Level minutes stroll to the beach and restaurant strip

With Dee Why's colourful eateries and picturesque beach only seconds away, this is an idyllic location to soak up the dream beachside lifestyle. Vibrantly light, wonderfully modern and remarkably spacious, it covers an impressive 103sqm on the top floor.

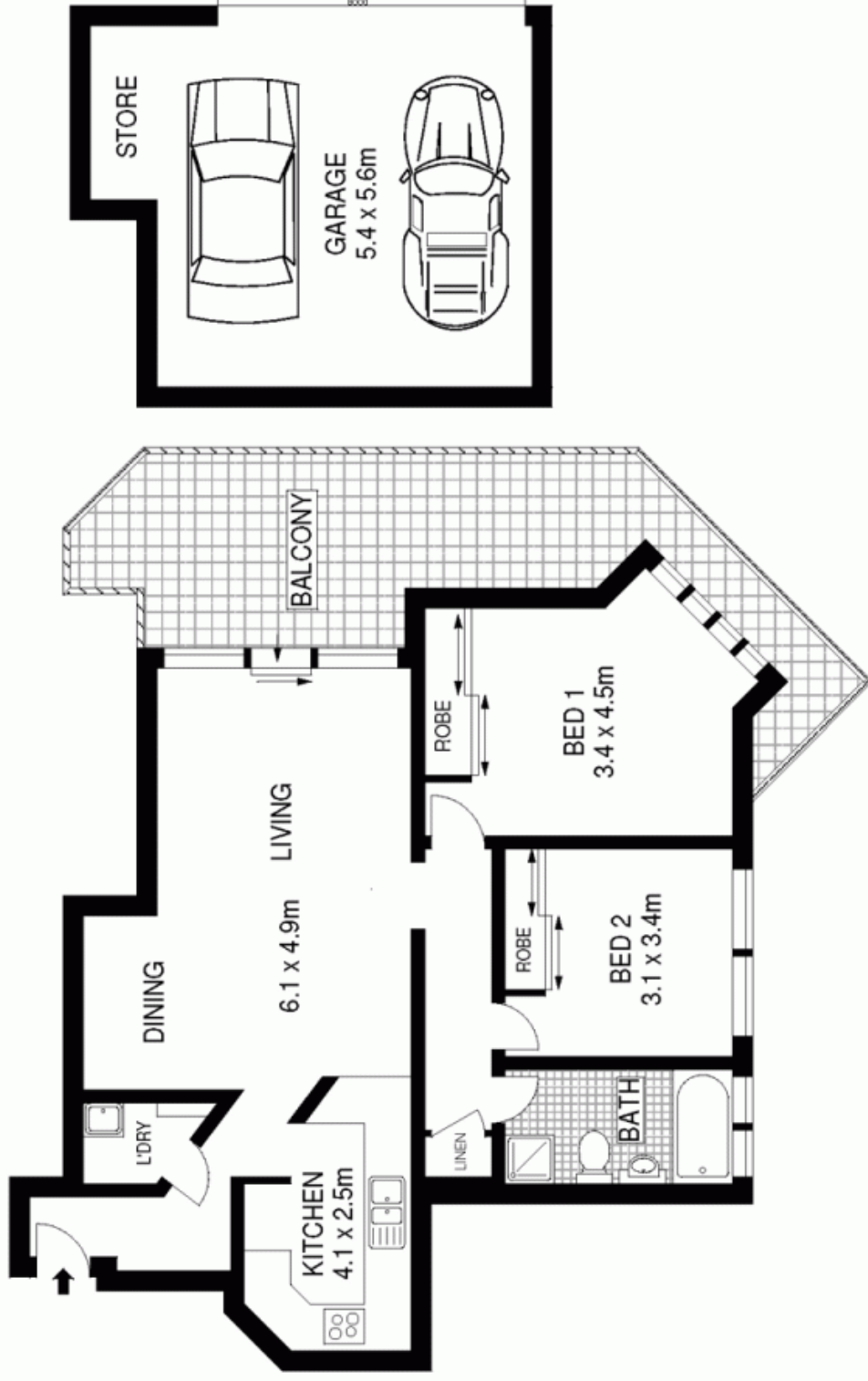
- Level minutes stroll to the beach and restaurant strip
- 'Carousel' is set amidst exquisitely landscaped gardens
- Wide sweeping living space with readily defined dining area
- Glass sliding doors open to a giant entertainers' terrace
- Modern open plan polyurethane kitchen, European appliances
- Gleaming white bathroom with separate bath and glass shower
- Ample double bedrooms with mirrored built-in wardrobes
- Full brick construction, security intercom, freshly painted
- Whisper quiet location, footsteps to buses, parks and shops
- Double lock up garage, internal laundry, scope to restyle

Price:

Over
\$550,000

Stone Manly

02 8962 2200



TOP FLOOR



0 1 2 3 4 5
 Scale in metres. Indicative only. Dimensions are approximate.