



LIFESTYLE

4/30 Eurobin Avenue MANLY, NSW

2 1 1

### On the second floor at the front of a block of only six

With Keirle Park at one end of the street, beaches at the other, and Lagoon Park across the road, this north-facing apartment is at the heart what makes this location one of the area's best and offers attainable coastal entry for lifestyle buyers.

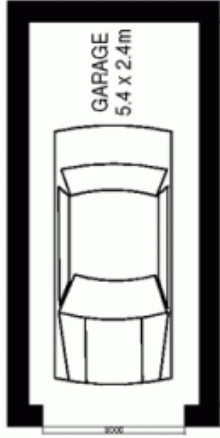
- On the second floor at the front of a block of only six
- Level walk to beach, shops, eateries and transport
- Northern aspect floods the apartment in natural light
- Freshly redecorated interiors including new carpet
- Two double bedrooms, one with mirrored built-ins
- Spacious living/dining expands to a northern balcony
- Good gas kitchen with dishwasher plus full bathroom
- Access within building to ground floor communal laundry
- Single lock-up garage, ample on-street parking
- Minutes to popular Queenscliff and Manly beaches

Price:

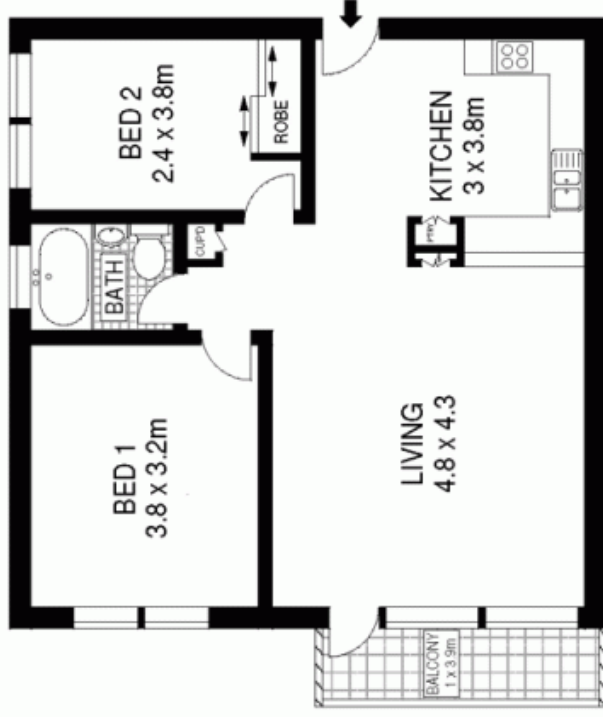
Over  
\$550,000

**Stone Manly**

02 8962 2200



GROUND LEVEL



LEVEL TWO



4/30 Eurobin Avenue, Manly

**McGrath**