



30 Hoddle Crescent DAVIDSON, NSW

3

2

2

Fresh interiors, modern colouring and floorboards throughout

Boasting a tranquil, elevated setting with leafy district views, this home offers a peaceful, easy-care lifestyle to those who enjoy comfort. Benefiting from a recent update, it is ready for immediate enjoyment and sits within a tightly held community.

Fresh interiors, modern colouring and floorboards throughout

Spacious living/dining area with wide windows and doors

Immaculate CaesarStone kitchen with quality Ilve appliances

Generous bedrooms with ceiling fans, two with built-in robes

Light and bright family bathroom with full bath, separate wc

Lush landscaped gardens and paved outdoor entertaining area

Wide front terrace with views to the surrounding bushland

Double carport, abundant storage space, quiet location

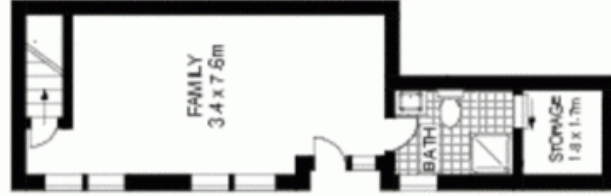
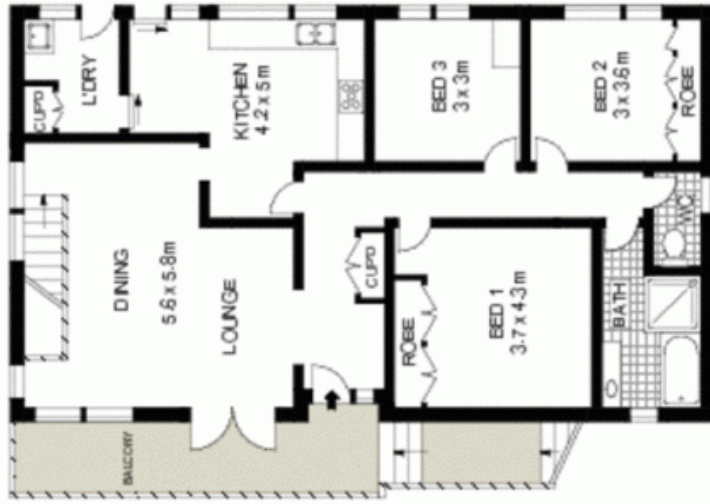
Minutes to Glenrose Centre, sports fields, local theatre

Price:

Over
\$700,000

Paul Honour

02 8030 5545



Scale in meters. Indicative only. Dimensions are approximate. All information contained herein is gathered from sources we believe to be reliable. However, we cannot guarantee its accuracy and interested persons should rely on their own enquiries.



McGrath

30 Hoddle Crescent, Davidson