



27 Darley Road MANLY, NSW

3 

1 

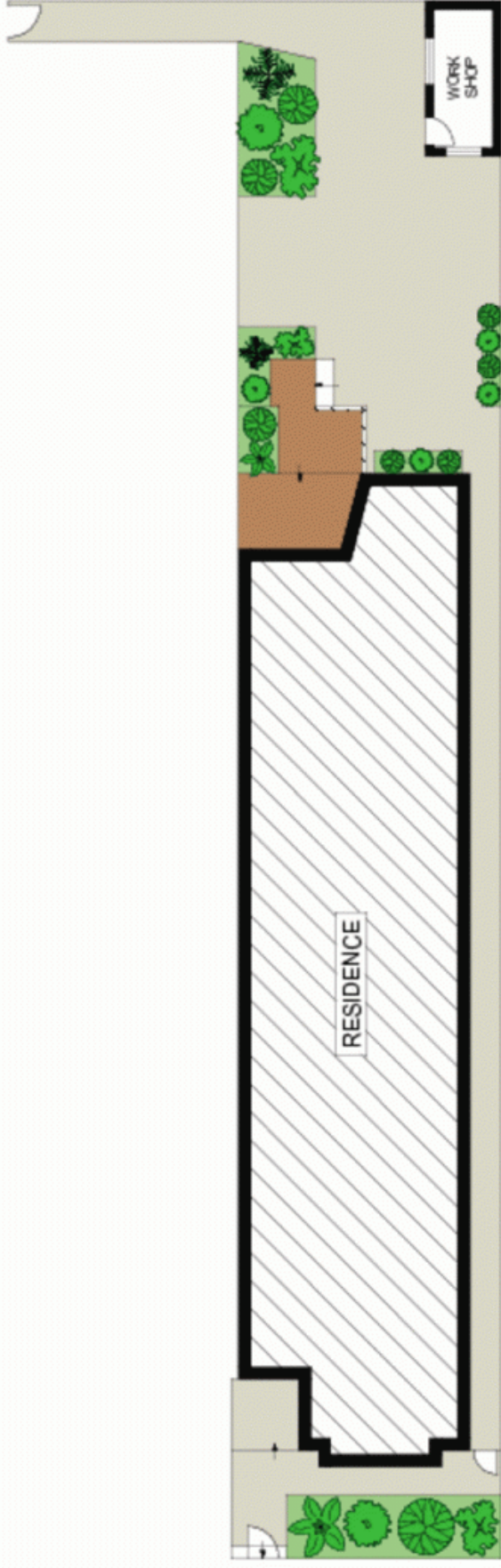
### Picture rails and ceiling roses adorn every bedroom

Surprisingly quiet and delightfully renovated with its ornate period features intact, this ambient semi is an easy level stroll to the beach, ferries, shops and restaurants. Built in the 'Paris end' of Darley Road this bright home will suit all lifestyles

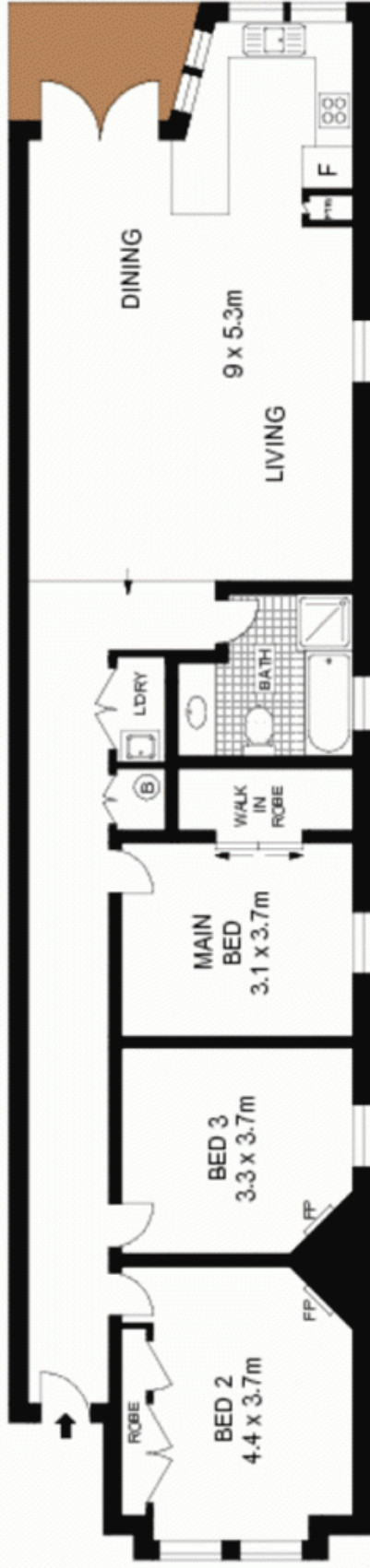
- Picture rails and ceiling roses adorn every bedroom
- High ceilings with wooden floorboards throughout
- CaesarStone bench and stainless steel SMEG kitchen appliances
- Main bedroom features roomy walk-in robe
- Spacious open plan living area with skylight and French doors
- Rear deck, sunny courtyard and brick workshed
- Side lane pathway for quick access to Ashburner St and beach
- Private and peaceful, attic roof storage and room to expand
- Gallery artwork hanging system and halogen downlights
- Metres to the beach, ferries, shops and boutique cafes

**Stone Manly**

02 8962 2200



SITE PLAN (NOT TO SCALE)



GROUND FLOOR



Scale in metres. Indicative only. Dimensions are approximate. All information contained herein is gathered from sources we believe to be reliable. However we cannot guarantee its accuracy and interested persons should rely on their own enquiries.

27 Darley Road, Manly

**McGrath**