



8/262 Pittwater Road MANLY, NSW



Peacefully placed at the rear of a boutique security block

Drenched in brilliant northerly sunlight a short level stroll from the beach, this exceptional town home promises a luxurious and carefree lifestyle. Covering an impressive 228sqm, it opens to a private paved entertainers' patio and level sun-drenched lawns

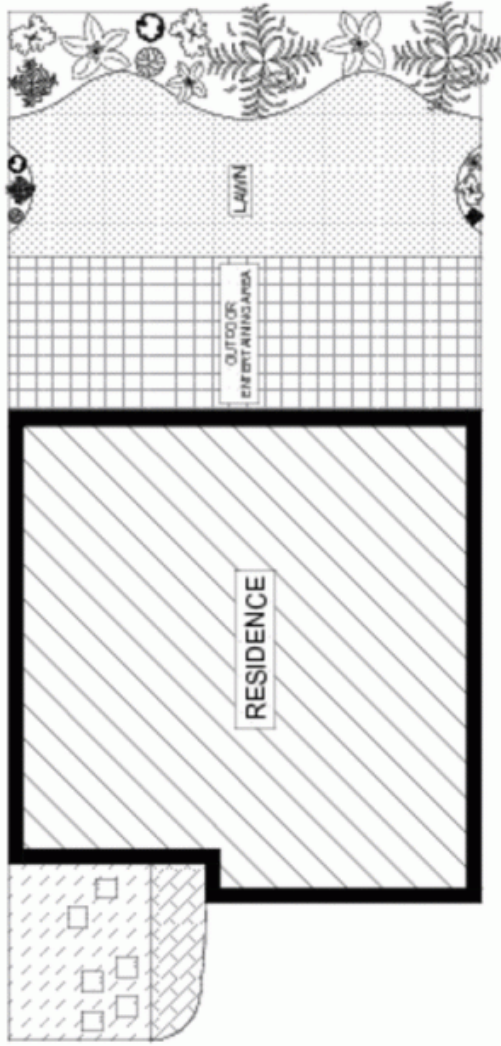
- Peacefully placed at the rear of a boutique security block
- Exquisitely manicured level lawns and lush tropical gardens
- Spacious lounge, separate dining area, casual dining space
- Stunning open plan granite kitchen overlooks the garden
- Three enormous bedrooms all with double built-ins
- Both the ensuite and main bathroom are stylish and modern
- Rear entertainers' patio with retractable all-weather awning
- Ten in complex, guest powder room, ducted air conditioning
- Footsteps to the beach, transport, shops, Manly Pool and parks
- Remote controlled double lock up garage, internal access

Price:

Over \$850,000

Stone Manly

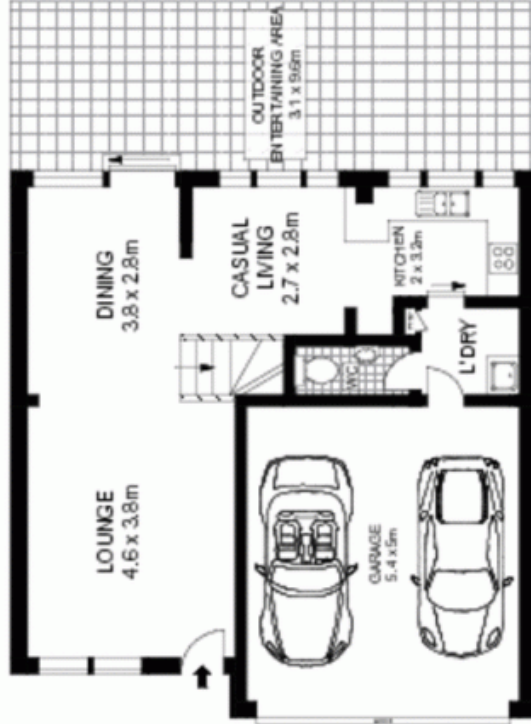
02 8962 2200



SITE PLAN (NOT TO SCALE)



LEVEL ONE



ENTRY LEVEL



Scale in metres. Indicative only. Dimensions are approximate. All information contained herein is gathered from sources we believe to be reliable. However we cannot guarantee its accuracy and interested persons should rely on their own enquiries.

8/262 Pittwater Road, Manly

McGrath