



40 Bower Street MANLY, NSW

4

3

2

Formal and informal living areas with stunning ocean views

Perched above Shelly Beach in one of Sydney's most revered oceanfront locations, this Fairy Bower property commands intimate world class ocean and coastal views from Manly all the way to the Central Coast. Cascading over 734sqm of land where your private glass edged pool looks to meet the sea, the property offers four bedrooms (master with walk-in robe and ensuite) and three bathrooms set over two levels.

Formal and informal living areas with stunning ocean views

Large open plan kitchen flows to entertaining decks

Stunning poolside entertaining area capturing the coastal panorama

Off street parking for two cars, versatile secure storage area

Seconds away from Shelly Beach, and a short stroll to Manly and the wharf

One of the largest blocks of land on the cliff side of the street

Price:

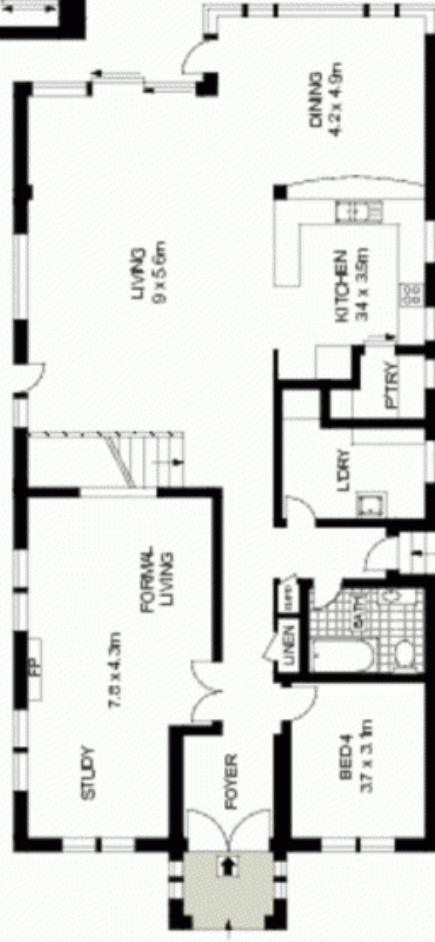
Over
\$5,000,000

Stone Manly

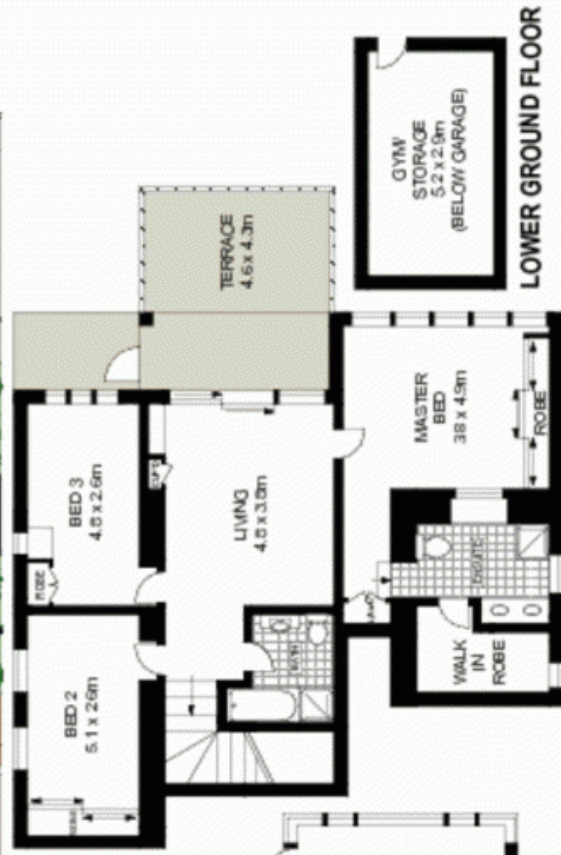
02 8962 2200



SITE PLAN (NOT TO SCALE)



GROUND FLOOR



LOWER GROUND FLOOR

LOWER GROUND FLOOR



Scale in meters. Indicative only. Dimensions are approximate. All information contained herein is gathered from sources we believe to be reliable. However we cannot guarantee it's accuracy and interested persons should rely on their own enquiries.

40 Bower Street, Manly

McGrath