



13 Wattle Road NORTH MANLY, NSW 4 1 3

Level child and pet friendly lawns with entertaining terrace

Delightfully set back from the street, this immaculate home offers a superb opportunity for a young or more established family. On 495sqm, this renovated residence is centrally located within an easy stroll to Curl Curl Beach, schools, shops and buses.

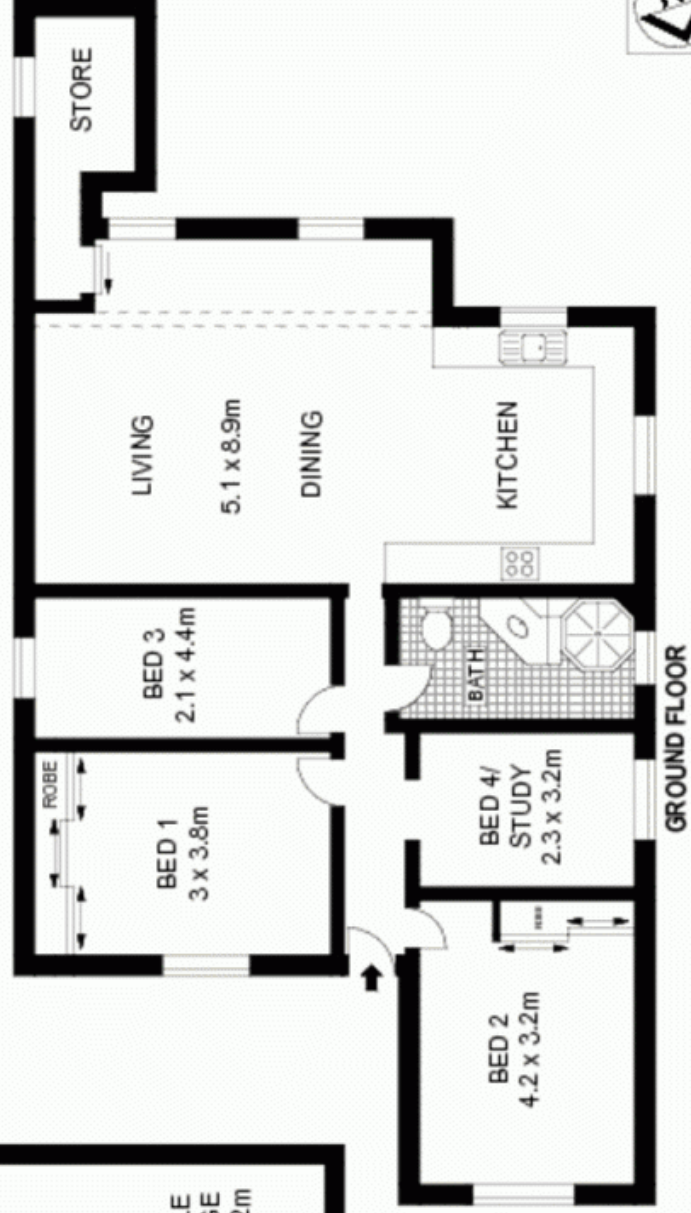
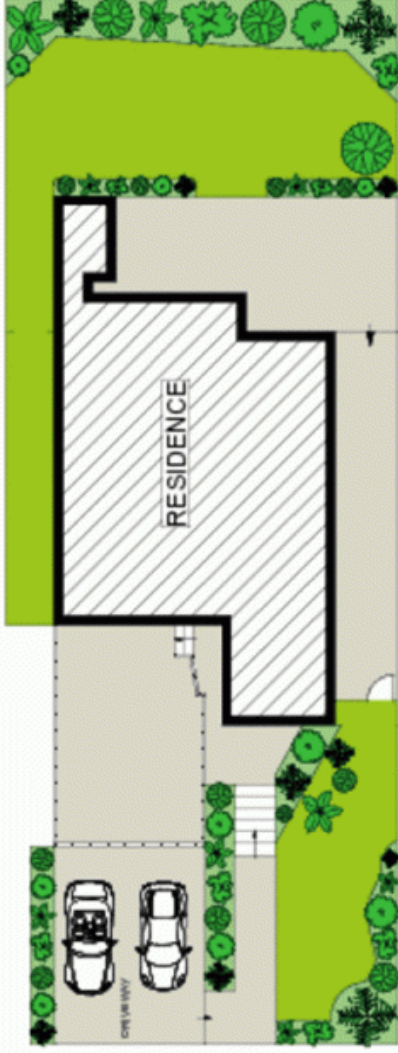
- Level child and pet friendly lawns with entertaining terrace
- Flowing indoor/outdoor open plan living including gas kitchen
- Bedrooms with built-ins and timber flooring throughout
- Sauna inspired main bathroom with slate/wood panel detail
- A second outdoor sitting area flanks the front of the home
- Surrounded by high walls to provide security and privacy
- Air conditioning, home alarm, covered entertaining area
- Ample storage plus hot and cold water outdoor shower
- Attractive family friendly home surrounded by native plants
- Double garage with driveway parking for another two cars

Price:

Over \$710,000

Stone Manly

02 8962 2200



Scale in meters. Indicative only. Dimensions are approximate. All information contained herein is gathered from sources we believe to be reliable. However we cannot guarantee its accuracy and interested persons should rely on their own enquiries.

McGrath

13 Wattle Road, North Manly