



5/208 Pittwater Road MANLY, NSW



### Fluid and bright open plan living and dining rooms

This whisper quiet seaside retreat is perfectly positioned in a small block of six within footsteps to Manly beach, boutique eateries and public transport. Set over two levels, the apartment enjoys an effortless outdoor flow perfect for entertaining.

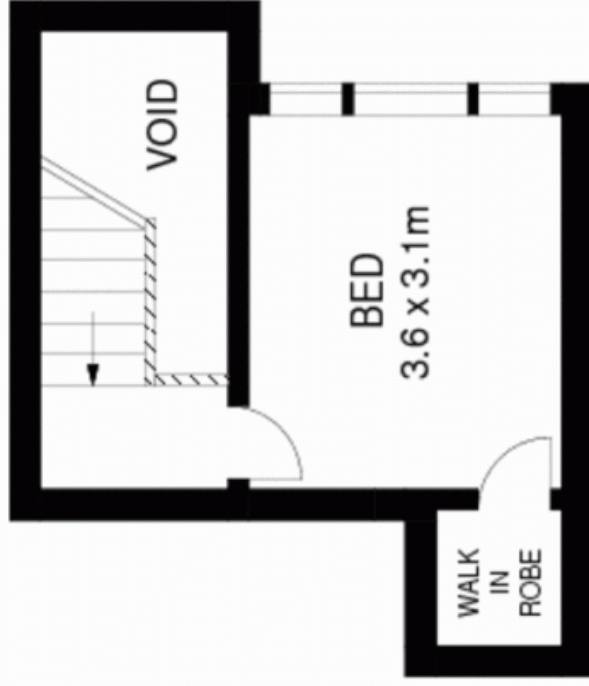
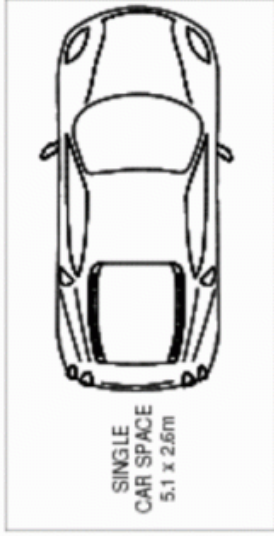
- Fluid and bright open plan living and dining rooms
- Flanked by a user-friendly kitchen with European laundry
- Easy servers' space from the kitchen to dining area
- Expansive and private sundappled entertainers' terrace
- Upper level master bedroom with sizeable walk-in wardrobe
- Open shower space and fresh white vanity in bathroom
- Includes under stairs storage, potential to holiday let
- Manly village on its doorstep with a variety of restaurants
- Comes with one sought after car parking space on the title
- Moments to the ferry, walking paths and easy city access

Price:

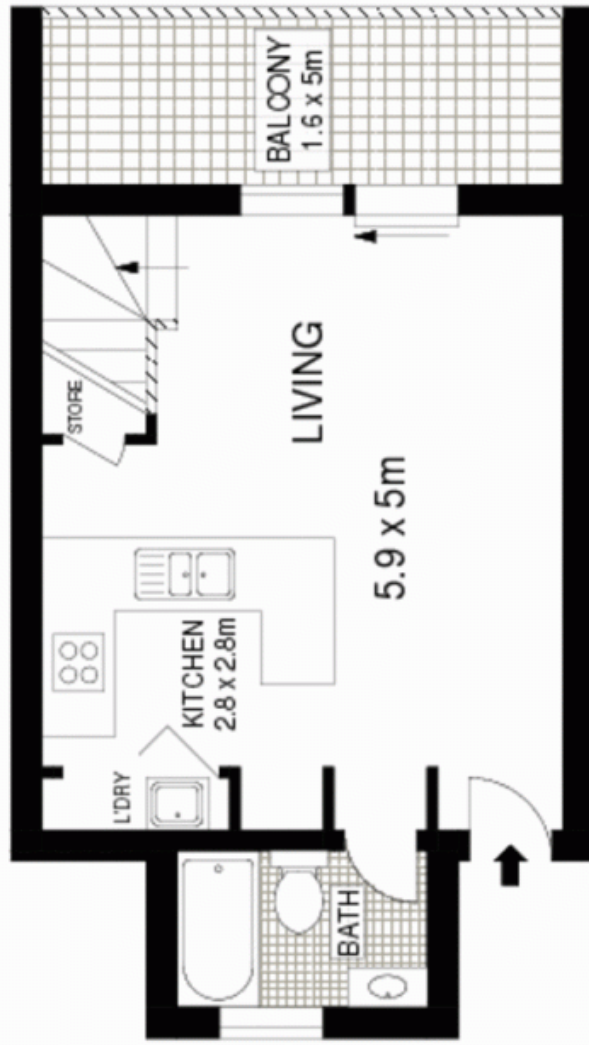
Over  
\$380,000

**Stone Manly**

02 8962 2200



UPPER LEVEL



ENTRY LEVEL ONE



Scale in metres. Indicative only. Dimensions are approximate. All information contained herein is gathered from sources we believe to be reliable. However we cannot guarantee it's accuracy and interested persons should rely on their own enquiries.

**McGrath**

5/ 208 Pittwater Road, Manly