

24/50 Crown Road QUEENSLIFF, NSW

2 

1 

1 

Ultra-spacious apartment with stunning ocean views

Sweeping 180 degree panoramas take centre stage from this superbly situated beachside apartment. Covering an impressive 85sqm at the rear of beautifully maintained building, it is only a short stroll from Queenscliff Beach or Freshwater Beach and Village.

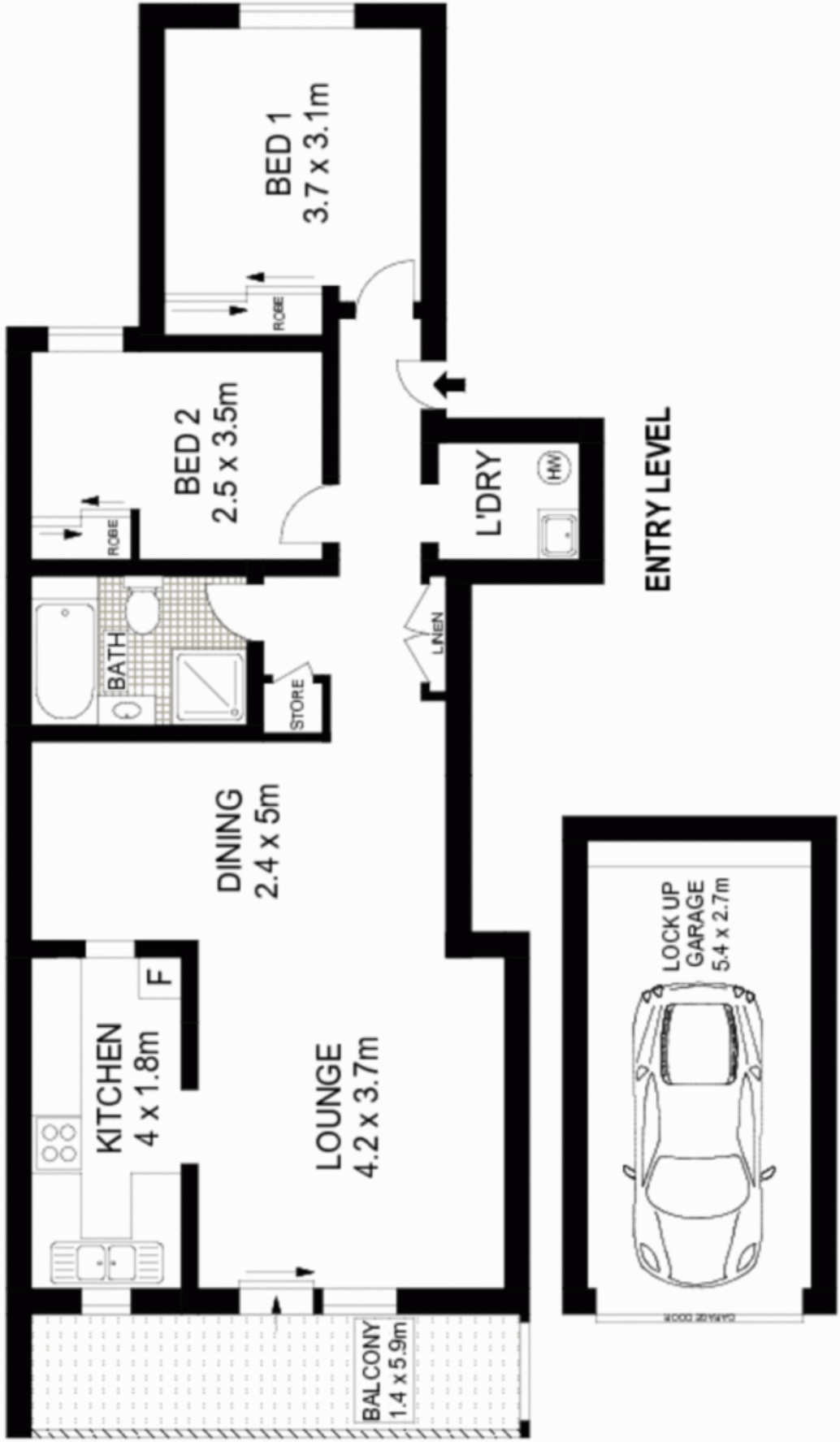
- Gaze across the breakers to the horizon and North Head
- Expansive district views stretch as far as the city skyline
- Enormous living space with I-shaped lounge and dining areas
- Easy flow to a sizable balcony which reveals the views
- Large tidy kitchen with views and scope to refresh
- The skylit bathroom comes with a separate shower and bathtub
- Ample double bedrooms with built-ins and ceiling fans
- Top floor position, up only one flight of stairs, full brick
- Metres to shops and cafes, moments from Manly's attractions
- Deep lock-up garage plus a separate internal laundry

Price:

Price guide over \$515,000

Stone Manly

02 8962 2200



Scale in metres. Indicative only. Dimensions are approximate. All information contained herein is gathered from sources we believe to be reliable. However we cannot guarantee its accuracy and interested persons should rely on their own enquiries.

24/50 Crown Road, Queenscliff

McGrath