



115 Harbord Road FRESHWATER, NSW



Character home with the world at its doorstep

Conveniently situated just metres from local shops and buses to the city and Manly Wharf, this pristine family home has immense appeal. Set on 664sqm of near level lawn, it has been recently refreshed for immediate enjoyment yet offers scope to recreate.

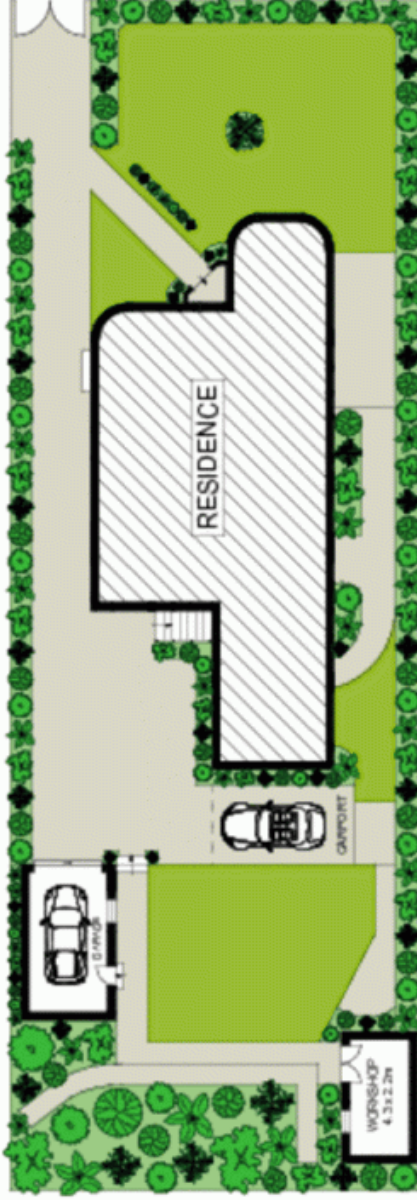
- 'St Kilda' is a full brick, cement rendered Art Deco home
- Short level stroll from Harbord Primary School and parks
- Easy walk to the beach and Freshwater Shopping Village
- High ceilings, elegant curved feature walls, timber flooring
- Formal living room, separate banquet sized dining room
- Modern kitchen with breakfast bar and induction cooktops
- Generous bathrooms, three sizable bedrooms plus study
- Private level lawns framed by pristine gardens
- Timber garden shed, dry underhouse storeroom or wine cellar
- Lock-up garage plus carport and a separate internal laundry

Price:

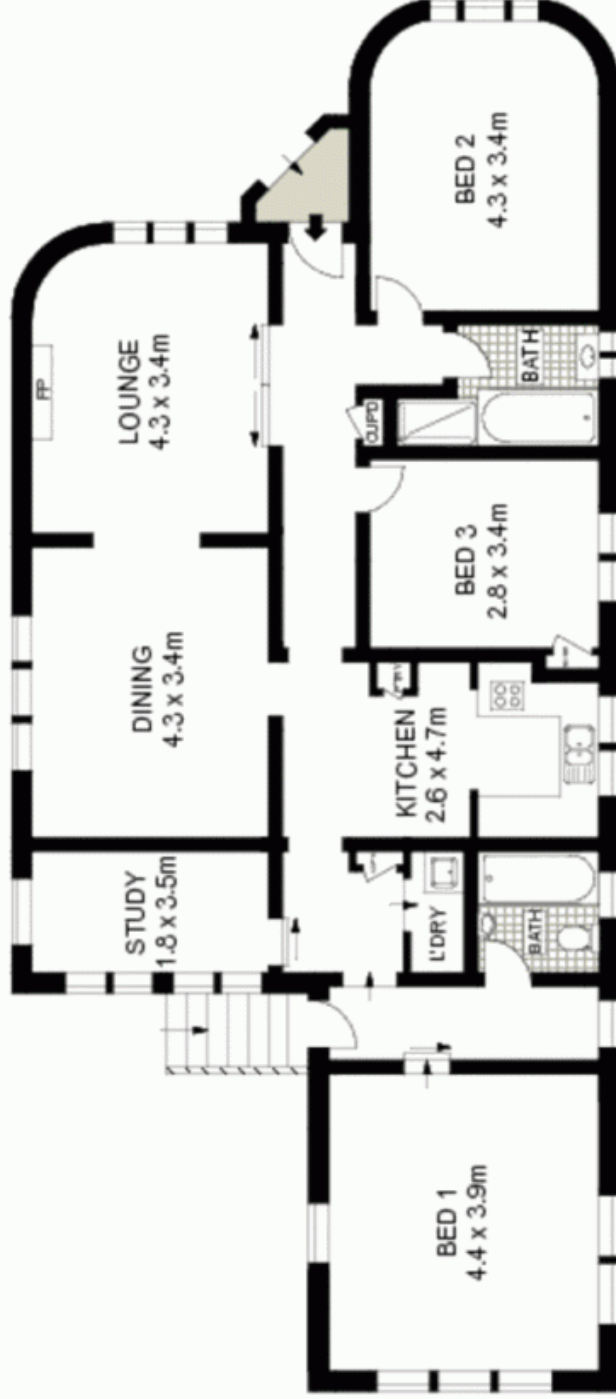
Price guide over \$850,000

Stone Manly

02 8962 2200



SITE PLAN (NOT TO SCALE)



GROUND FLOOR



Scale in metres. Indicative only. Dimensions are approximate. All information contained herein is gathered from sources we believe to be reliable. However, we cannot guarantee its accuracy and interested persons should rely on their own enquiries.

115 Harbord Road, Freshwater

McGrath