



15/295 Condamine Street MANLY VALE, NSW 2 2 2

Ultra huge north-east terrace, quiet location

This large two bedroom apartment is in an ultra-convenient, whisper quiet location. Great for entertaining with a massive 50sqm sun drenched north east facing terrace, with district views. Pet friendly.

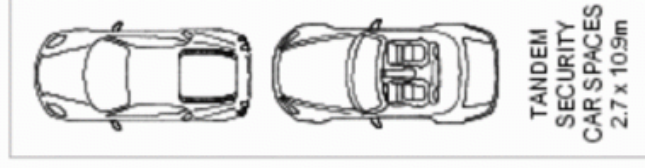
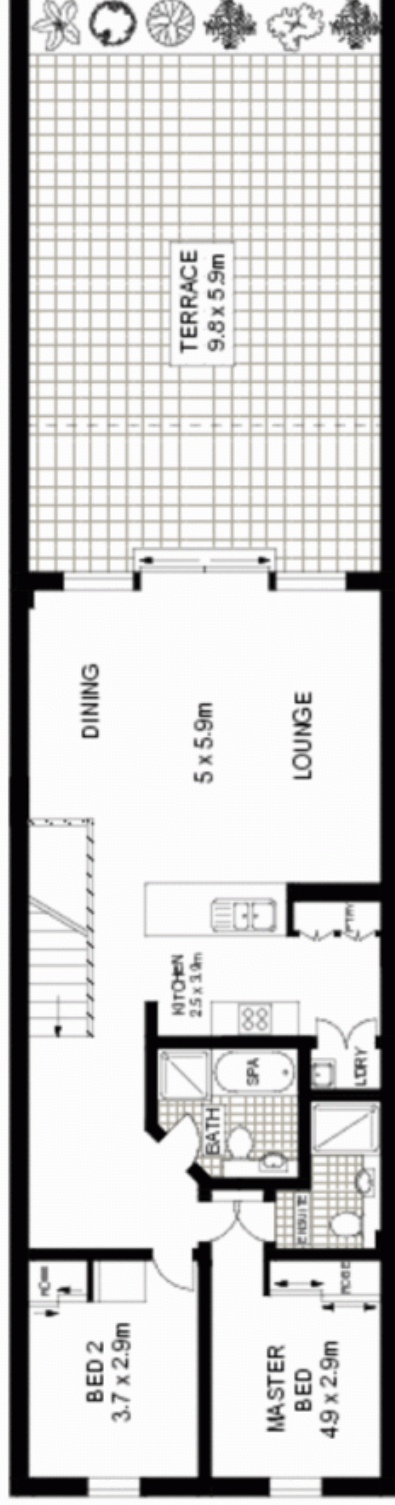
- Whisper quiet, top floor east facing apartment with a large terrace
- Tandem parking, comfortably fits two large cars
- Generous lounge and dining area, modern open gas kitchen
- Only a few footsteps to shops, schools and cafes
- Convenient transport, easy access to city express buses
- Two double bedrooms with built-ins and two bathrooms
- Bright and warm, sunny apartment
- Easy to maintain lift within building, internal access from parking
- Extra large separate secure storage space
- Bright entertainers' terrace suitable for everyday living

Price:

Price guide over \$510,000

Stone Manly

02 8962 2200



LEVEL TWO



BASEMENT TWO



BASEMENT ONE



McGrath

15/295 Condomine Street, Manly Vale