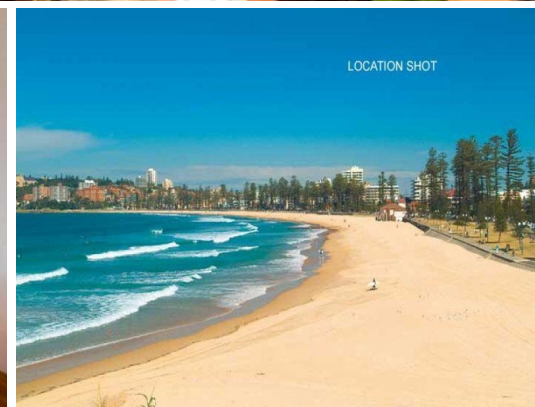
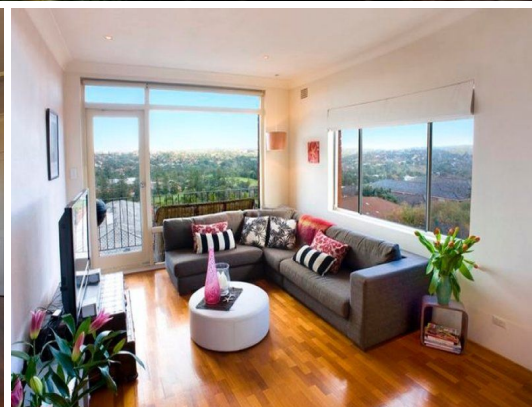


ACTUAL VIEW



12/68 Crown Road QUEENSCLIFF, NSW



### Stylish apartment with magnificent views

Perfectly placed for convenience, this spectacular modern apartment enjoys magnificent views in an unrivalled location. The views are on top of the world set over Manly, shops and transport are footsteps away.

Flawlessly finished interiors, spacious living area

Free flowing living and dining area

Master bedroom with built-in

Boutique block, easy to maintain

Secure, separate storage area to share

Large main bathroom with full bath and internal laundry

Walk to Freshwater shops or Manly Beach and foreshore parks

Oversized undercover car space to fit any car

Sensational panoramic views from balcony and lounge room

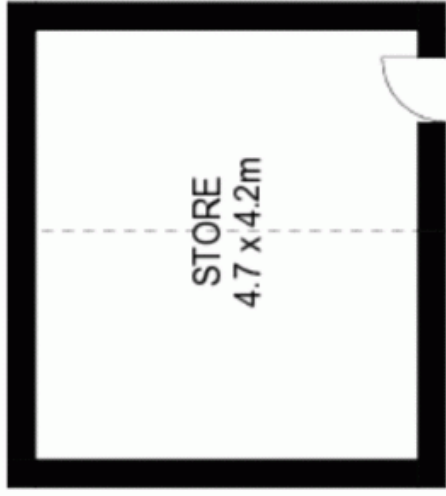
Walk to beaches, north/south head views with city skyline aspect

Price:

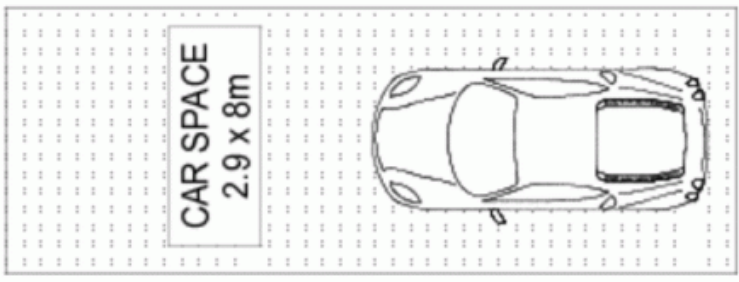
Price guide over \$435,000

**Stone Manly**

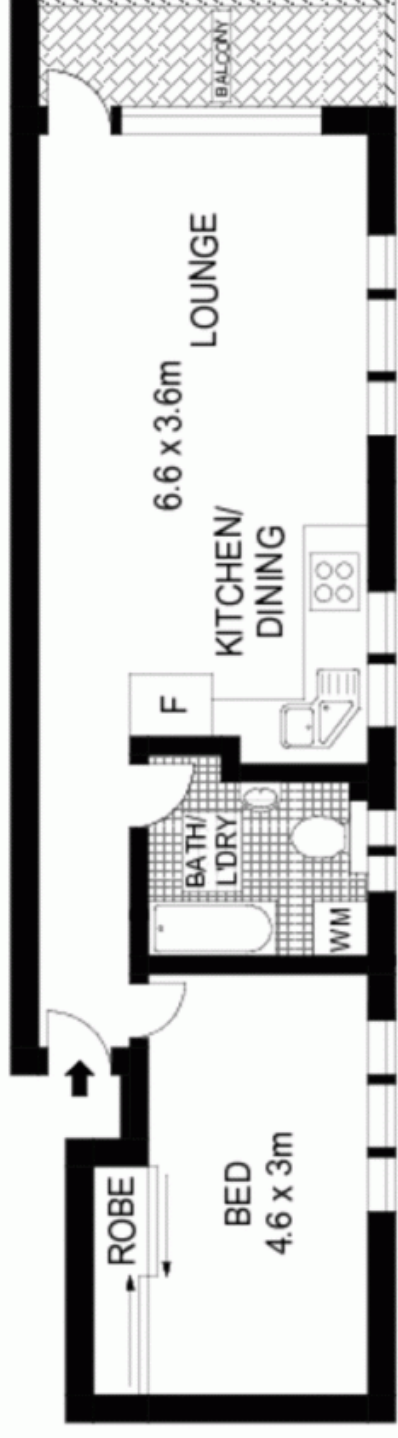
02 8962 2200



GROUND FLOOR



GROUND FLOOR



TOP FLOOR



Scale in metres. Indicative only. Dimensions are approximate. All information contained herein is gathered from sources we believe to be reliable. However we do not guarantee its accuracy and interested persons should rely on their own enquiries.



**McGrath**

12/68 Crown Road, Queenscliff