



5/57A Ethel Street SEAFORTH, NSW

3

2

2

Brand new luxury apartment with spectacular views

Sweeping 180 degree Middle Harbour panoramas take centre stage from this exceptional penthouse style luxury apartment. Covering an impressive 182sqm over two floors, it boasts an expansive sunlit rooftop terrace and an unbeatable Seaforth Village location.

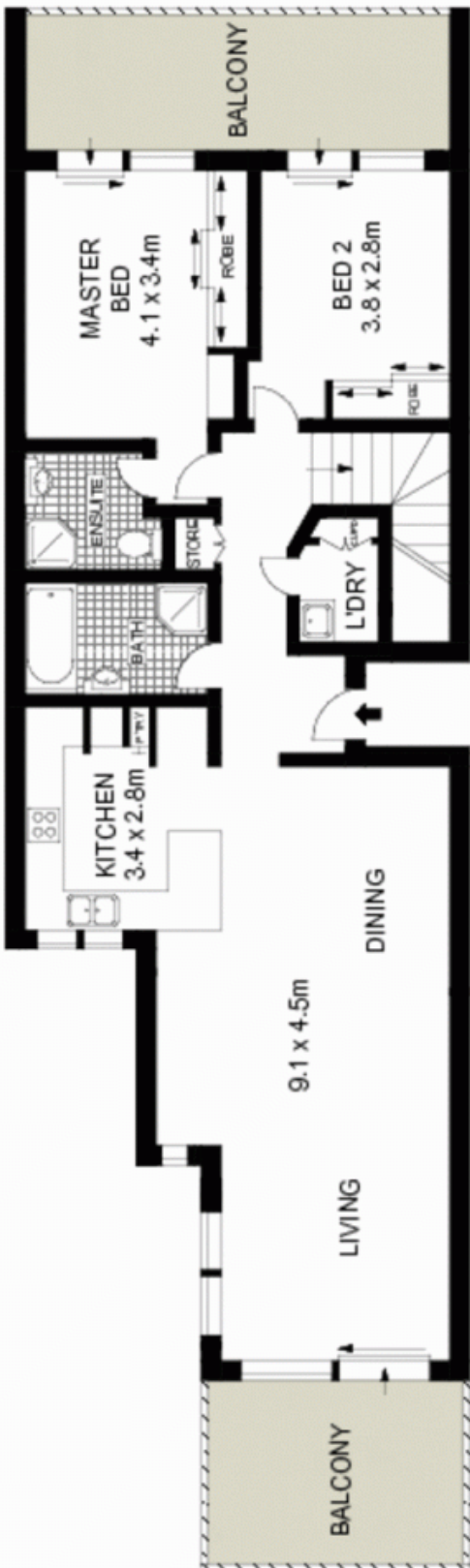
- Spectacular rooftop terrace with views to the city skyline
- Cosy cafes, restaurants and shops literally at the doorstep
- Manly Wharf buses, minutes from the city
- Enter via the second floor, three separate outdoor spaces
- Enormous living space with a readily defined dining area
- Easy flow to a generous entertainers' terrace at the rear
- Stunning open plan CaesarStone kitchen with Miele appliances
- Master bedroom with ensuite opens to sunlit northern terrace
- Quality boutique building of five, ducted air conditioning
- Double lock-up garage, lock-up storeroom, video intercom

Price:

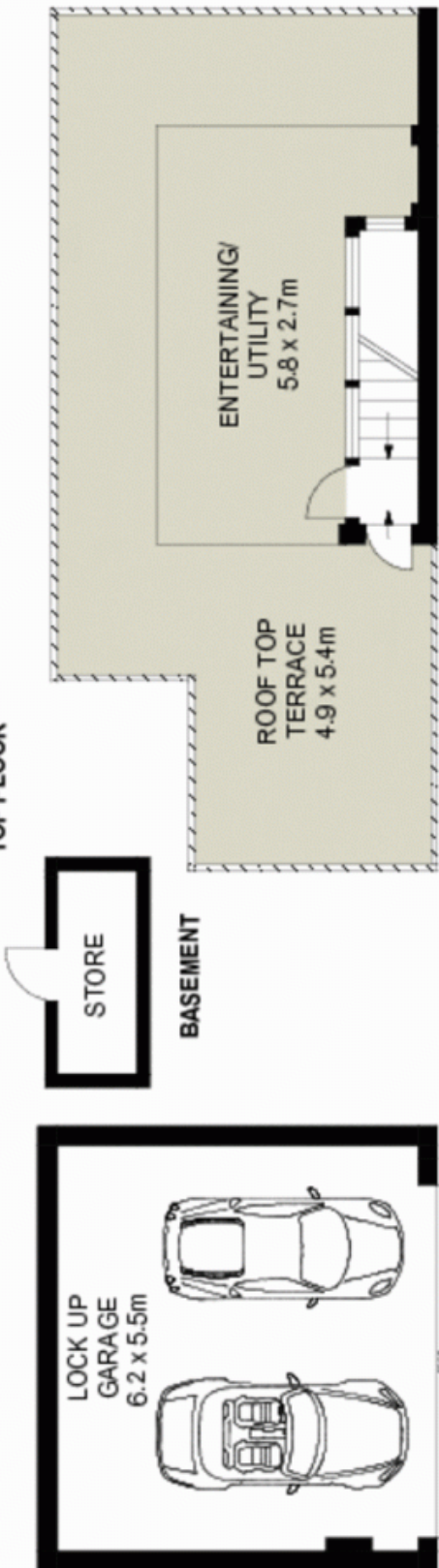
Price guide over \$950,000

Stone Manly

02 8962 2200



TOP FLOOR



UPPER FLOOR



Scale in metres. Indicative only. Dimensions are approximate. All information contained herein is gathered from sources we believe to be reliable. However we cannot guarantee its accuracy and interested persons should rely on their own enquiries.

5/57A Ethel Street, Seaforth

McGrath