



188 Alfred Street NARRAWEENA, NSW



An idyllic haven for young families

Move straight in and enjoy this beautifully presented home from the very first day, there's not a cent to be spent. Nestled on 525sqm of private, near level lawns and landscaped gardens, it is ideally situated a short level stroll from schools and shops.

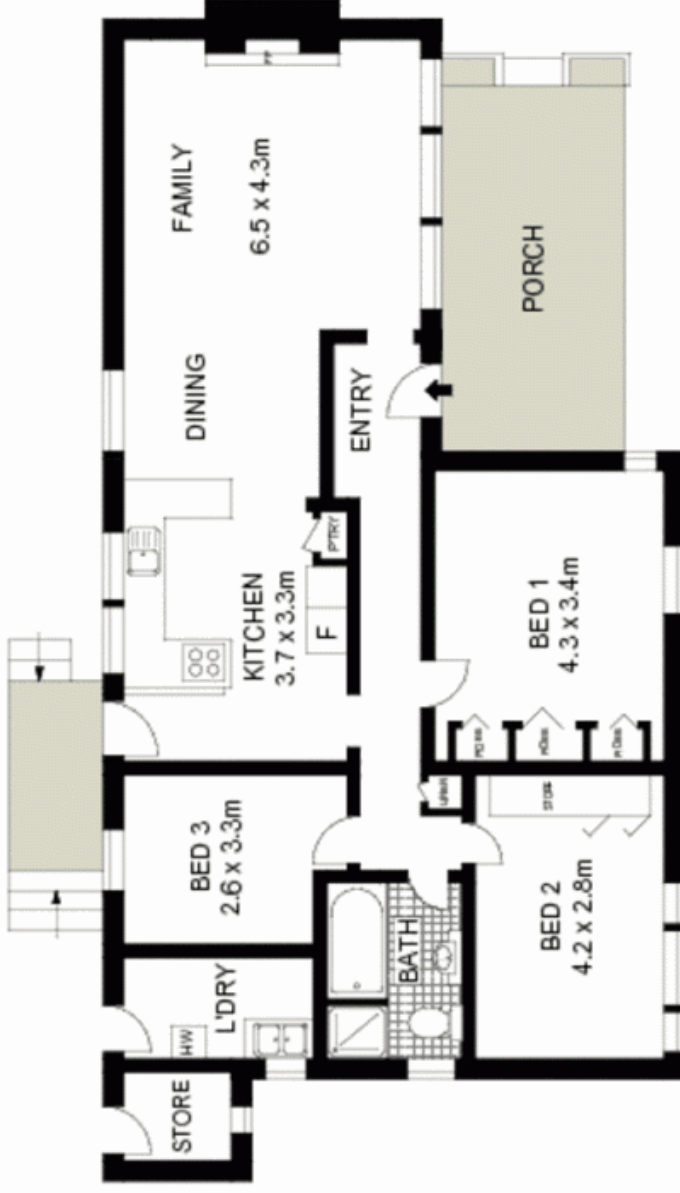
Less than a two minute stroll to Narraweena Primary School
 Seconds to Narraweena Shops and St John the Apostle Primary
 Footsteps to Beverley Job Park, city buses at the doorstep
 L-shaped lounge and dining area warmed by a cosy fireplace
 Modern open plan kitchen with timber benches and dishwasher
 Near-original full bathroom in absolute mint condition
 Full brick home with three double bedrooms
 Sunlit, child-safe gardens, separate workshop plus storeroom
 High ceilings, Kauri Pine flooring, styled in neutral tones
 Two car spaces, only a 2.5km drive from Dee Why Beach

Price:

Price guide over \$630,000

Stone Manly

02 8962 2200



GROUND LEVEL



SITE PLAN (NOT TO SCALE)

Scale in metres. Indicative only. Dimensions are approximate. All information contained herein is gathered from sources we believe to be reliable. However, we cannot guarantee its accuracy and interested persons should rely on their own enquiries.

188 Alfred Street, Narraweena

McGrath