



10 Paris Street BALGOWLAH, NSW

4

2

1

Sumptuous Federation adjoining the golf course

Set on 696sqm of near level lawns with a dazzling north-to-rear aspect, this elegant weatherboard classic is an enchanting family haven. Generously proportioned and graced with exquisite period detailing, it is placed at the end of an exclusive cul-de-sac.

- Erected c1911, adorable facade, tranquil golf course vistas
- High patterned ceilings, leadlight windows, timber flooring
- Vibrantly light, cleverly redesigned for fluid family living
- Formal lounge room warmed by a cosy combustion fireplace
- Enormous family and dining space oversee the rear garden
- Effortless flow to a clear perspex covered north facing deck
- Fully equipped modern open plan kitchen, scope to restyle
- Master bedroom with ensuite, stylish spa bathroom, study
- Private manicured lawns and gardens, sparkling pool and spa
- Carport plus car space, stroll to schools and city transport

Stone Manly

02 8962 2200



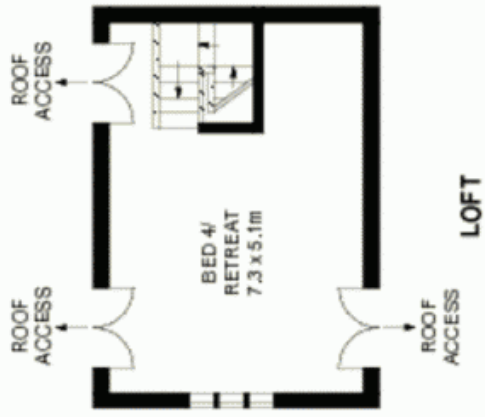
SITE PLAN (NOT TO SCALE)



GROUND FLOOR



Scale in meters. Indicative only. Dimensions are approximate. All information contained herein is gathered from sources we believe to be reliable. However, we cannot guarantee its accuracy and interested persons should rely on their own enquiries.



LOFT

10 Paris Street, Balgowlah

McGrath