



321/168 Queenscliff Road QUEENSLIFF, NSW

3

2

2

A showcase of luxury, space and convenience

Spectacular in both proportion and appeal, this ultra-modern penthouse style apartment is ideal for executives or downsizers. Boasting a massive terrace with views across the lagoon and golf course, it is only a short level stroll to the beach.

Only one road to cross on the stroll to Queenscliff Beach

Covers a staggering 190sqm within the impressive 'Catalina'

Secure access, exquisitely manicured grounds, gym in complex

Vast separate lounge and dining areas flooded with light

Easy flow to the sun-drenched 58sqm entertainers' terrace

Sleek open plan kitchen, granite benchtops, Miele appliances

Three ample double bedrooms with mirrored built-in wardrobes

Main bedroom with ensuite, separate study, internal laundry

Lift access, ducted air conditioning, gas heating point

Double lock-up garage, city buses at door, moments to Manly

Price:

Price guide \$785,000 - \$840,000

Stone Manly

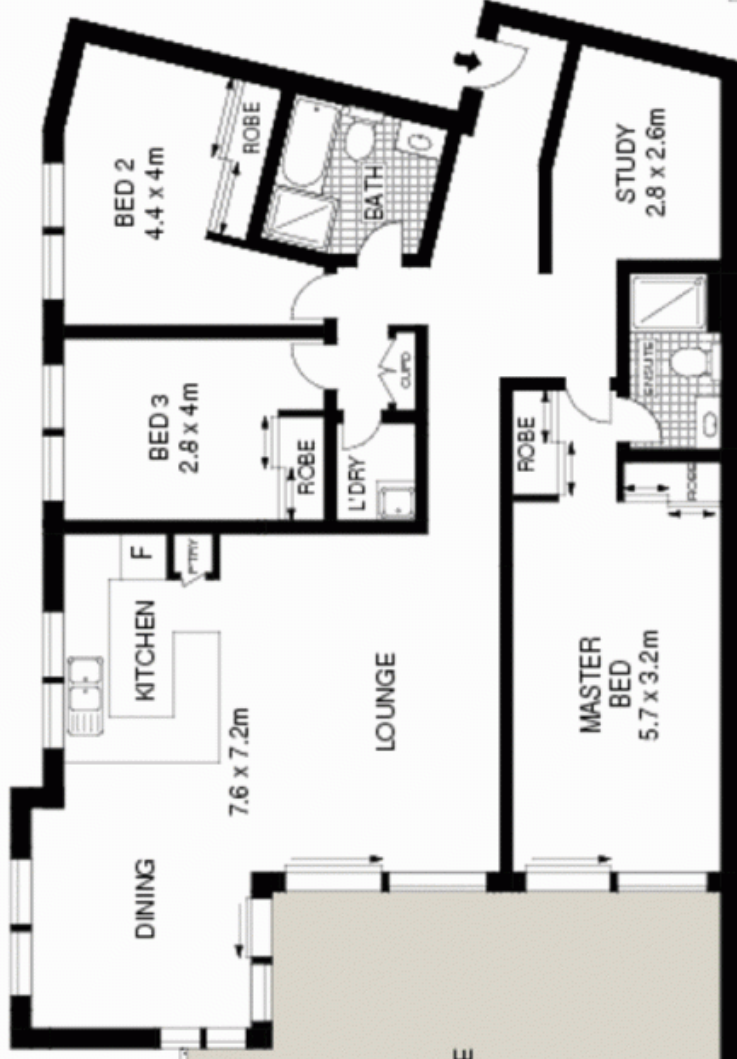
02 8962 2200



GROUND FLOOR



TERRACE



THIRD FLOOR



Scale in metres. Indicative only. Dimensions are approximate. All information contained herein is gathered from sources we believe to be reliable. However we cannot guarantee its accuracy and interested persons should rely on their own enquiries.



McGrath

321/168 Queenscliff Road, Queenscliff