



3/1819 Pittwater Road MONA VALE, NSW 3  2  2 

A selection of luxury residences for the over 55's

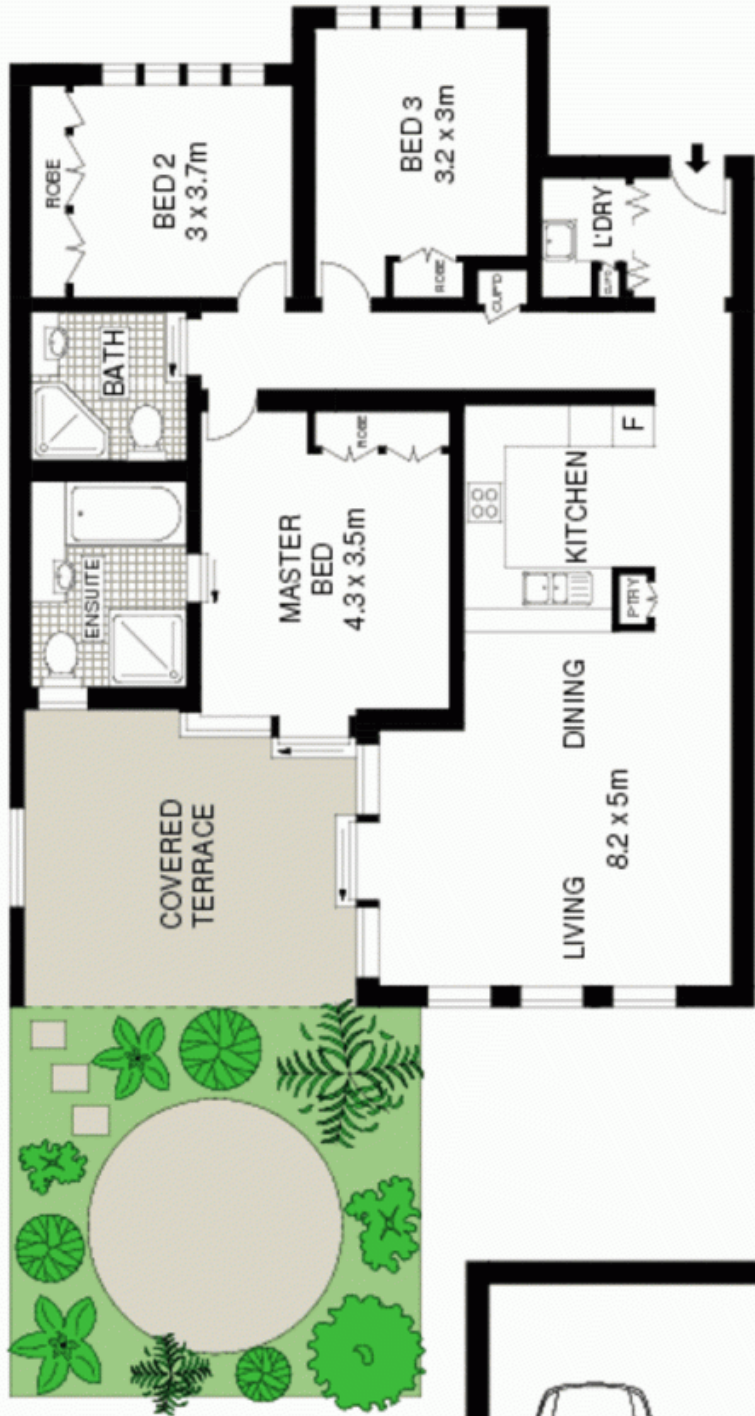
Nestled amid pristine gardens only metres from Bayview Golf Course, the magnificent 'Mornington' delivers the ultimate in luxury and convenience. On the ground floor with lift access, it is extra spacious and opens to a sun drenched entertainers' terrace.

- Covers an impressive 198sqm with a sunny aspect
- Expansive living space with dedicated dining area
- Easy flow to covered terrace with leafy outlooks
- Master bedroom with ensuite and built-ins, stylish bathrooms
- Stunning CaesarStone kitchen, quality European appliances
- Tranquil gardens, common family barbecue area, level access
- Ducted air conditioning, spotted gum hardwood flooring
- Buses near the door, direct golf cart access to the course
- Double security lock-up garage with lift access, no stairs
- Garden apartment and first floor apartment still available

Price: Price \$895,000

Stone Manly

02 8962 2200



GROUND FLOOR



LOWER GROUND FLOOR



Scale in metres. Indistinctive only. Dimensions are approximate. All information contained herein is gathered from sources we believe to be reliable. However we cannot guarantee its accuracy and interested persons should rely on their own enquiries.

3/ 1819 Pittwater Road, Mona Vale

McGrath