



76 Pittwater Road MANLY, NSW 3 1

Refreshed Victorian terrace in a central location

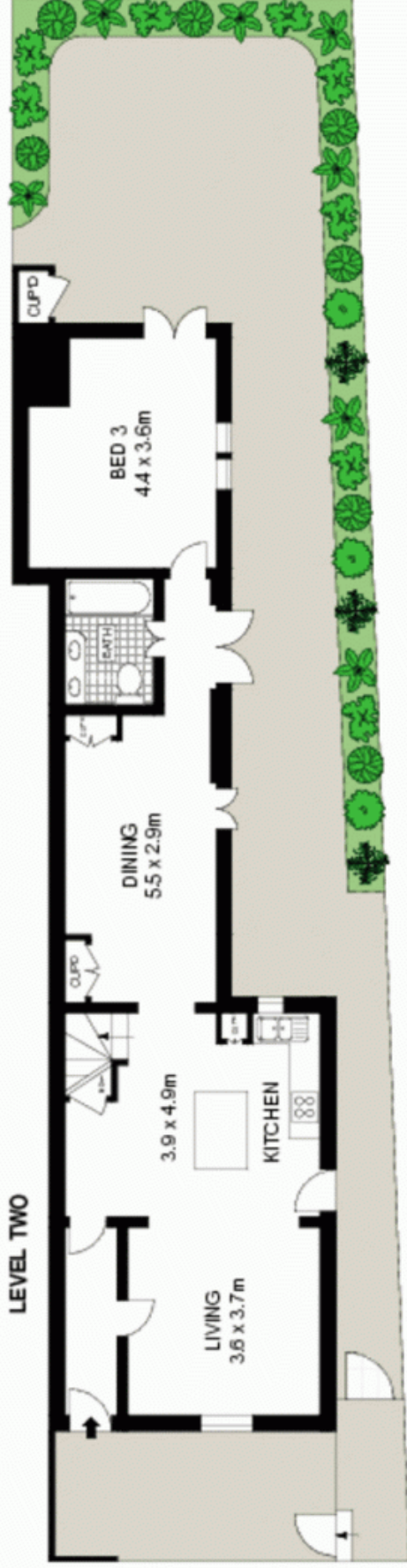
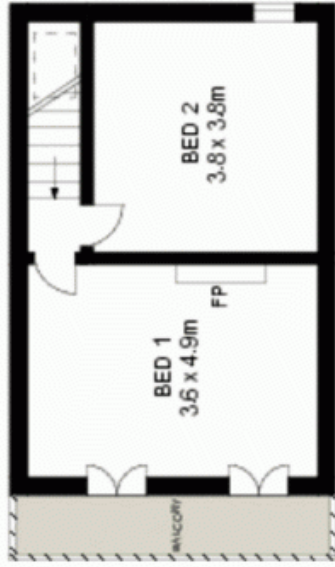
Blessed with ambient charm and styled with contemporary flair, this elegant Victorian terrace is an extraordinary beachside pad. One of only two, soaring over two levels and holds a prized position on the fringe of the village, just 300m from the beach.

- A level two minute amble from the world famous Manly Beach
Short stroll from thriving eateries, The Corso and the wharf
Spacious living room overlooks the private front courtyard
Separate skylit dining area, stunning contemporary bathroom
Sleek open CaesarStone kitchen with dishwasher and gas stove
Generous bedrooms, master with a cosy cast iron fireplace
Elevated front verandah with elaborate Victorian lacework
Potential for further extension of the first floor, lapsed DA
Tranquil paved and landscaped courtyards at rear and side
Timber flooring, high ceilings, plantation shutters, secure

Price: Price guide over \$1,190,000

Stone Manly

02 8962 2200



All information contained herein is gathered from sources we believe to be reliable. However, we cannot guarantee its accuracy and interested persons should rely on their own enquiries.



76 Pittwater Road, Manly

McGrath