

9 William Street NORTH MANLY, NSW

5 2 2

A 'house sized' Federation semi in a key location

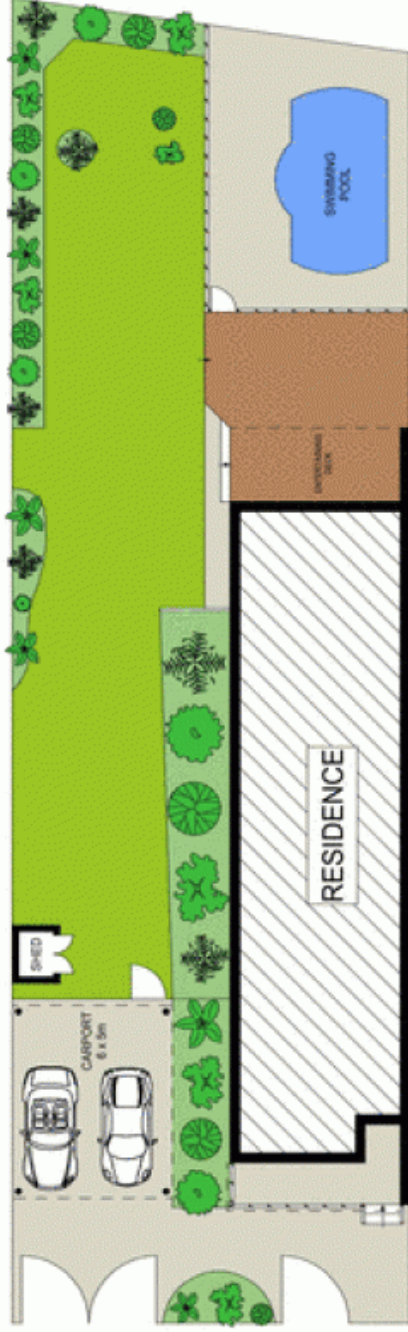
Blessed with character and styled with flair, this stunning Federation semi is graced with proportions larger than that of your average house. Set on 474sqm of private level lawns with a sparkling pool, it is tucked away in highly prized central location.

- Formal living room warmed by a cosy cast iron fireplace
- Dual level semi with sun drenched front porch and courtyard
- Stylish bathrooms with antique timber vanities
- Sweeping level lawns lined by palms, tranquil water feature
- Family and dining space flows to covered entertainers' deck
- Modern open plan kitchen with quality European appliances
- Four large double bedrooms with built-ins, main with ensuite
- Additional fifth bedroom or home office, metres to bus services

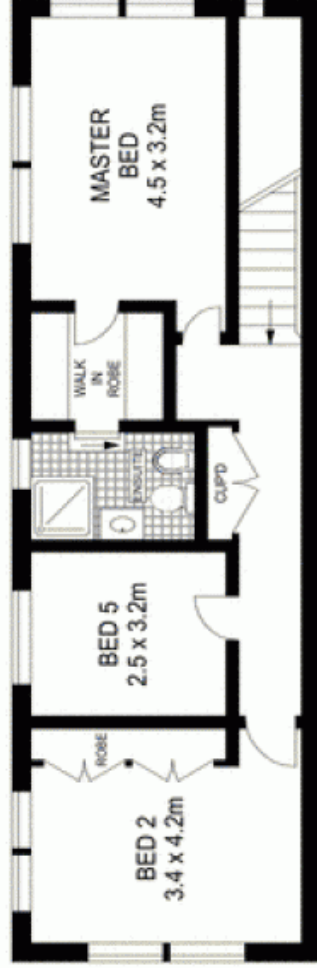
Price: Price guide over \$900,000

Stone Manly

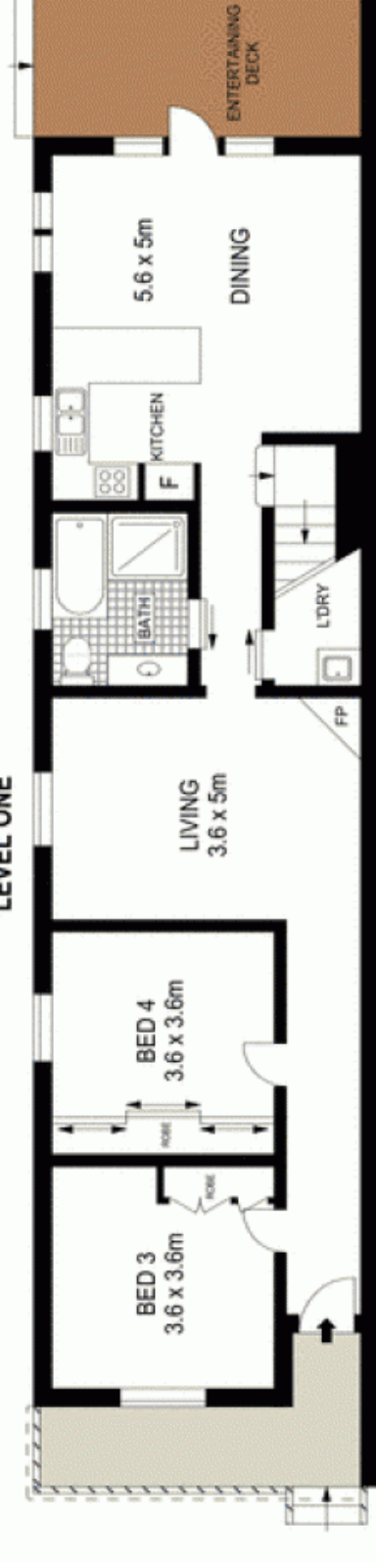
02 8962 2200



SITE PLAN (NOT TO SCALE)



LEVEL ONE



ENTRY LEVEL

Scale in metres. Indicative only. Dimensions are approximate. All information contained herein is gathered from sources we believe to be reliable. However we cannot guarantee its accuracy and interested persons should rely on their own enquiries.