



67 Bower Street MANLY, NSW



Mesmerising coastal panoramas in a premier address

A substantial and superbly appointed residence in the area's most highly prized address, this private seaside family haven is the ultimate lifestyle retreat. Reveling in mesmerising northerly coastal panoramas, it is nestled in between Manly and Shelly Beach.

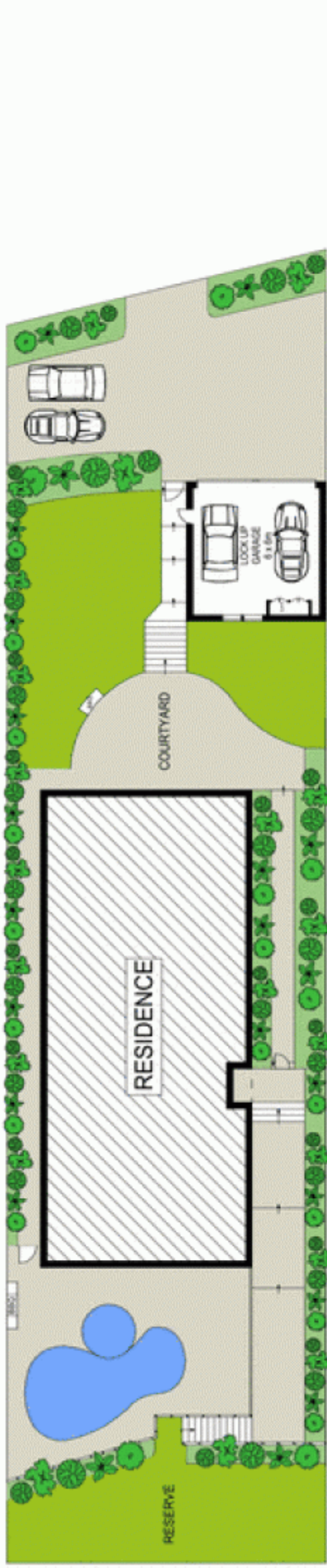
- Intimate views across Cabbage Tree Bay to the horizon
- Gaze along the northern beaches to the Central Coast
- Short walk to the beach, cosmopolitan eateries and shops
- Living space and sitting room open to sunny poolside terrace
- Formal dining room, family room, upstairs children's retreat
- Granite kitchen with European appliances, marble bathrooms
- Superb master suite plus study or fifth bedroom with ensuite
- Placed on 696sqm of near level grounds, two street frontages
- Sweeping terracotta terraces with a heated pool and spa
- Double garage, two built-in barbecues, wine cellar, storage

Price:

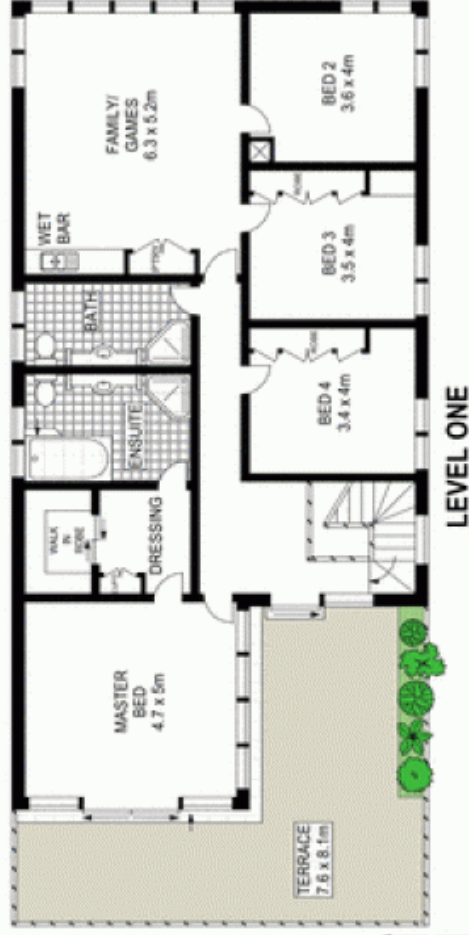
Price guide over \$4,000,000

Stone Manly

02 8962 2200



SITE PLAN (NOT TO SCALE)



LEVEL ONE



GROUND LEVEL



Scale in metres. Indicative only. Dimensions are approximate. All information contained herein is gathered from sources we believe to be reliable. However we cannot guarantee its accuracy and interested persons should rely on their own enquiries.