



32/6 Pacific Street MANLY, NSW

3

2

2

Luxurious beachside penthouse apartment

Enjoy panoramic ocean and beach views from this stunning, world class penthouse apartment, just steps from the sand and surf. Caressed by cooling sea breezes and bathed in all day sun, it captures the relaxed holiday atmosphere of an endless summer.

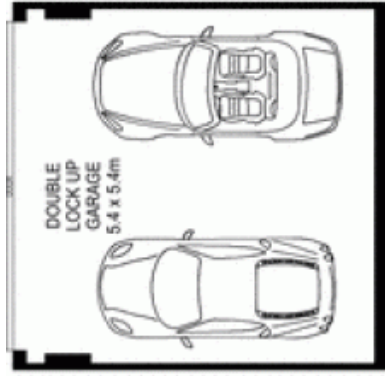
- Prime position at the quiet northern end of Manly beach
- House sized apartment on the top floor of Shearwater?
- The deep terrace is big enough to entertain a crowd
- Huge living area with a separate study or media room
- Glass enclosed dining room with mesmerising views
- Gourmet European/gas kitchen, abundant cabinetry
- Bedrooms feature plantation shutters and built-in robes
- Elegant master with his and hers robes, marble ensuite
- Separate laundry, air conditioning and double lock up garage
- This is a breathtaking apartment with every convenience

Price: Price guide over \$2,300,000

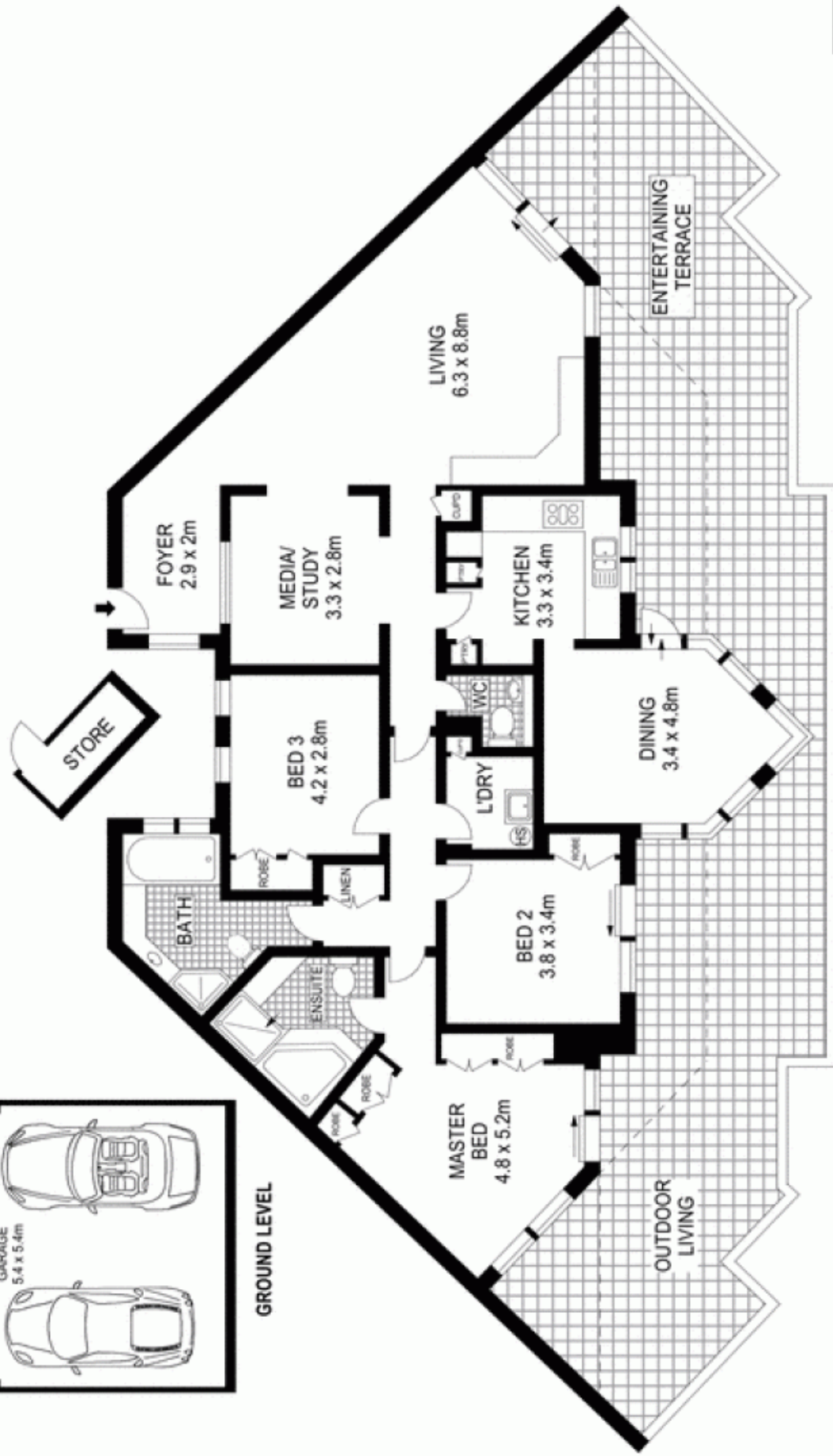


Candice Cattell

0417 311 777



GROUND LEVEL



LEVEL FOUR



Scale in metres. Indicative only. Dimensions are approximate. All information contained herein is gathered from sources we believe to be reliable. However we cannot guarantee its accuracy and interested persons should rely on their own enquiries.



32/6 Pacific Street, Manly

McGrath