



1/82 Pacific Parade DEE WHY, NSW

2 1 1

### An ideal first home or beachside investment

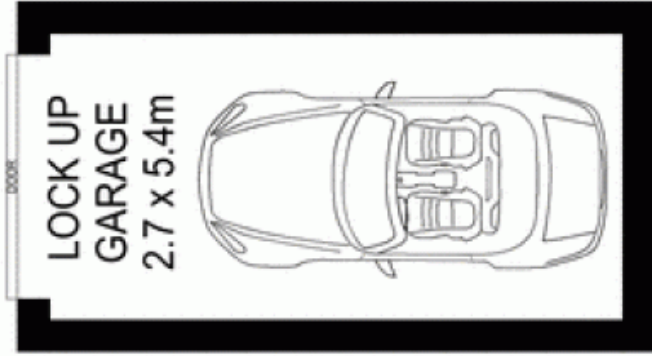
Elevated and pulled away from the street for superior privacy, this well maintained apartment holds a superb position amid leafy gardens. It allows doorstep access to buses and is mere metres from shops, the beach and Dee Why's famed restaurant strip.

- Fresh neutral tones and new carpet featured throughout
- Combined living and dining area with easy in/outdoor flow
- Sliding glass doors open to covered entertainers' balcony
- Balcony gazes onto the complex's relaxing landscaped gardens
- User-friendly kitchen equipped with cooktop and oven
- One of the bedrooms offers a mirrored built-in wardrobe
- Good sized bathroom with a separate bath and shower
- Internal laundry, easy access to single lock-up garage
- Desirable and supremely convenient tree lined street address
- Location is only 30 minutes drive from Sydney's CBD

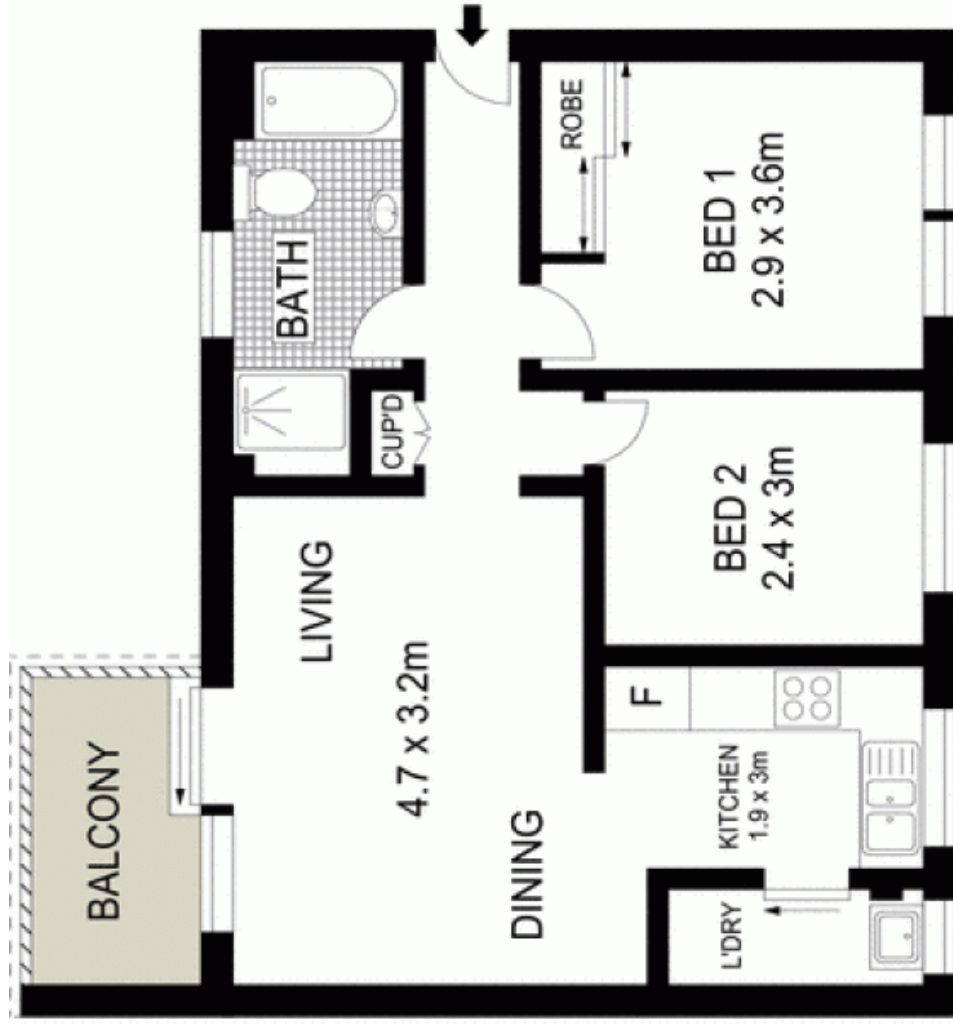
**Price:** Price guide over \$450,000

**Stone Manly**

02 8962 2200



**GROUND LEVEL**



**LEVEL ONE**



Scale in metres. Indicative only. Dimensions are approximate. All information contained herein is gathered from sources we believe to be reliable. However we cannot guarantee its accuracy and interested persons should rely on their own enquiries.

1/82 Pacific Parade, Dee Why

**McGrath**