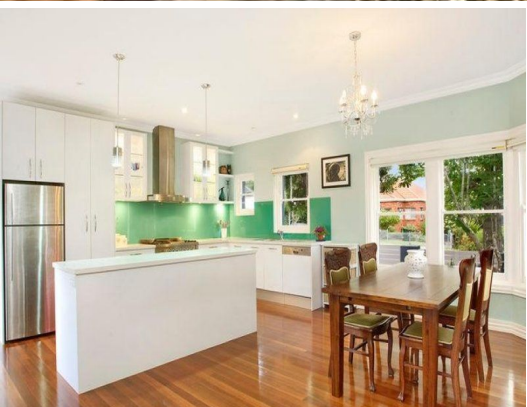


STONE



12 Welch Street NORTH MANLY, NSW



### Relaxing contemporary family home, ideally located

Presenting as-new interiors amid beautiful landscaped gardens, this north facing double brick home creates an idyllic child-friendly haven in a wonderfully quiet location. The residence is set on a level 697sqm parcel close to city transport and beaches.

- Picturesque corner block address is perfect for children
- Renovated home with deluxe finishes, many special qualities
- Light filled living areas feature turpentine timber floors
- Rosewood bi-folds doors allow an easy in/outdoor flow
- Spacious merbau entertainers' deck, cabana, outdoor spa
- Freestanding garage can be studio, home office or retreat
- Open Ilve fitted CaesarStone kitchen with glass splashbacks
- Good sized bedrooms, enclosed sunroom adjoins new bathroom
- 100% wool carpet, gas bayonet, rainwater tank, ample storage
- Brand new plumbing and wiring, gas hot water system

Price:

Price guide over \$1,250,000

Stone Manly

02 8962 2200



Property. Dimensions are approximate. All information contained herein is gathered from sources we believe to be reliable. However we cannot guarantee its accuracy and interested persons should rely on their own enquiries.

Street, North Manly

**McGrath**