

91 Bower Street MANLY, NSW

4

2

Sumptuous beachhouse in Manly's premier street

Enviably located in Manly's most prestigious street with northerly ocean views, this alluring beach house combines rustic charm with modern luxuries in effortless harmony. It is set on a near level 880sqm and within a short stroll to the sand.

Footsteps from the pristine shores of Fairy Bower Beach

Short five minute stroll to Manly or Shelly Beaches

Sweeping living and dining space under cathedral ceiling

Easy flow to a northerly deck and private level front garden

Deluxe granite kitchen with commercial grade gas cooktop

Spacious bedrooms with built-ins, master has a spa ensuite

Formal entry, guest w/c, casual dining, enormous storeroom

Ducted air conditioning, Jetmaster fireplace, timber floors

Entertainers' sandstone courtyard merges with level lawns

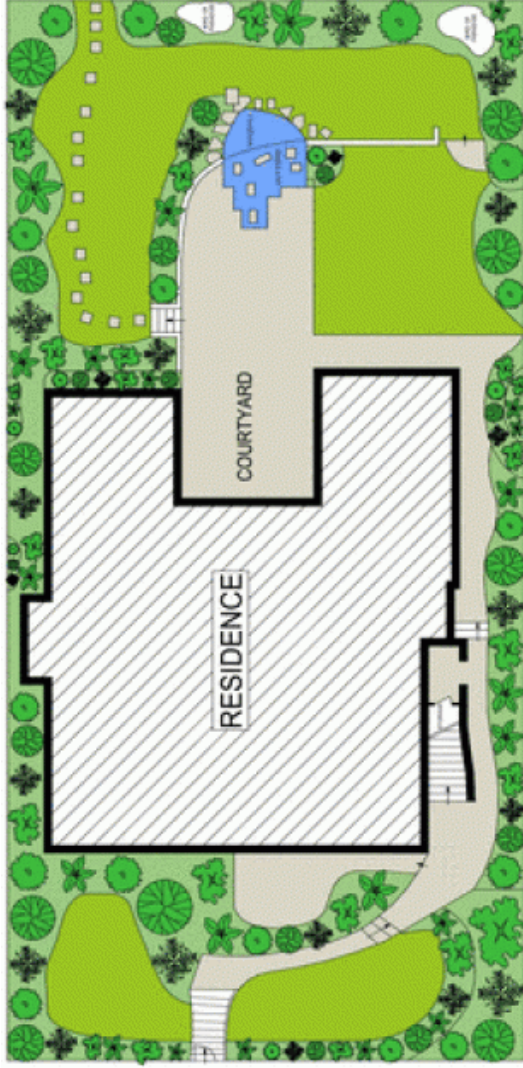
Private landscaped native gardens with a waterfall and pond

Price:

price guide on request

Stone Manly

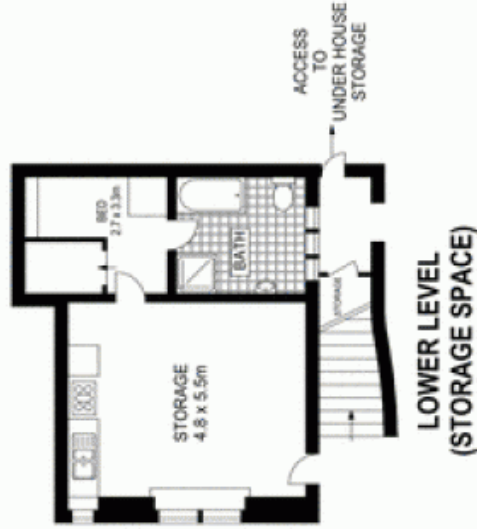
02 8962 2200



SITE PLAN (NOT TO SCALE)



UPPER LEVEL



LOWER LEVEL
(STORAGE SPACE)



Scale in metres. Indicative only. Dimensions are approximate. All information contained herein is gathered from sources we believe to be reliable. However we cannot guarantee its accuracy and interested persons should rely on their own enquiries.