



2/2 Victoria Parade MANLY, NSW

2 2 2

A rare grand 1920's original on the harbourfront

Seize an unrepeatable opportunity to breathe some creative life into this rare original c1920's apartment. Blessed with generous proportions, exquisite period detailing and stunning harbour views, it is situated directly across the road from the harbour.

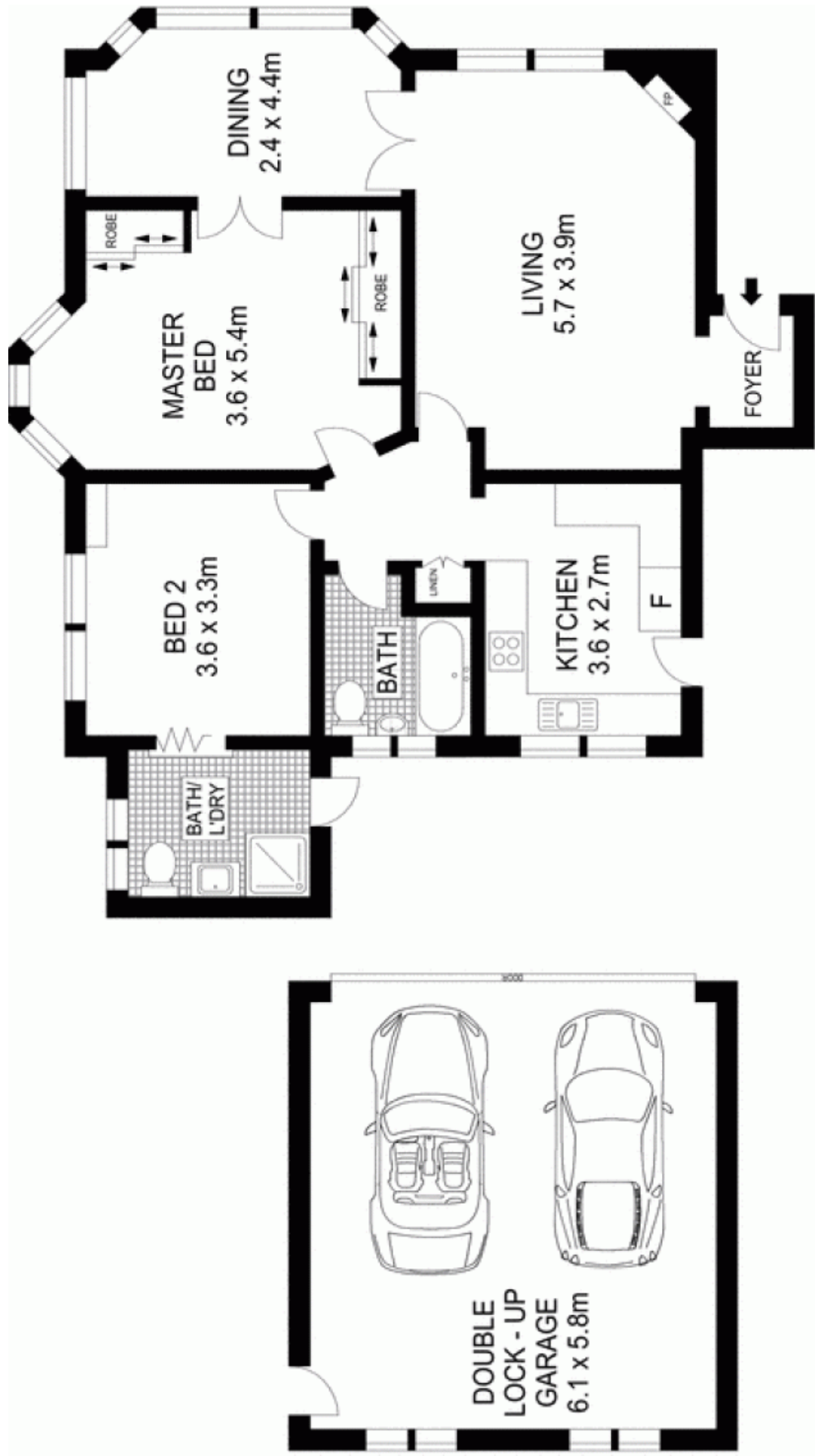
- The grand 'Abbeylix' stands defiant of time by the harbour
- Covers 128sqm in an adorable c1920's company title building
- Views across the harbour to Reef Beach and the city skyline
- Metres from Manly Cove Beach and footsteps from Manly Wharf
- Level stroll to vibrant eateries and the famous Manly Beach
- High patterned ceilings, bay windows, gas heating points
- Generous living space with sunlit north facing bay window
- Large north facing sunroom with spectacular harbour views

Price: Price guide over \$950,000



Candice Cattell

0417 311 777



GROUND FLOOR



Scale in metres. Indicative only. Dimensions are approximate. All information contained herein is gathered from sources we believe to be reliable. However we cannot guarantee its accuracy and interested persons should rely on their own enquiries.

2/2 Victoria Parade, Manly

McGrath