



16 Serpentine Crescent NORTH BALGOWLAH, NSW



A huge block with exciting potential

A huge 1,066sqm block with a desirable north east rear aspect, this address presents exciting possibilities to knock down the existing c1950s home and custom design a spacious family haven. There is potential to build up for views to the ocean STCA.

Set amid quality homes on a well regarded and quiet street

Three bedrooms, separate lounge and dining areas

Large, well fenced grassy lawns with established trees

Original bath and kitchen, dedicated internal laundry

Lock-up garage, separate storage room, side access driveway

Moments from Manly Dam walking and cycling tracks

Handy to exceptional schools including Seaforth Public

Footsteps to express city buses and Balgowlah Oval

Less than 5km from vibrant Manly Beach and shopping village

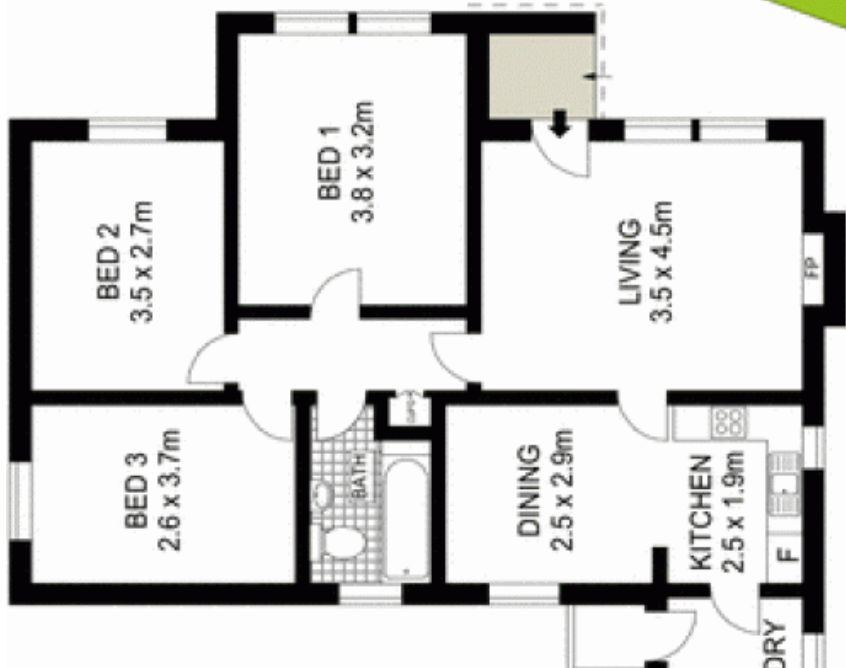
Easy walk to North Balgowlah and Seaforth village shops

Price:

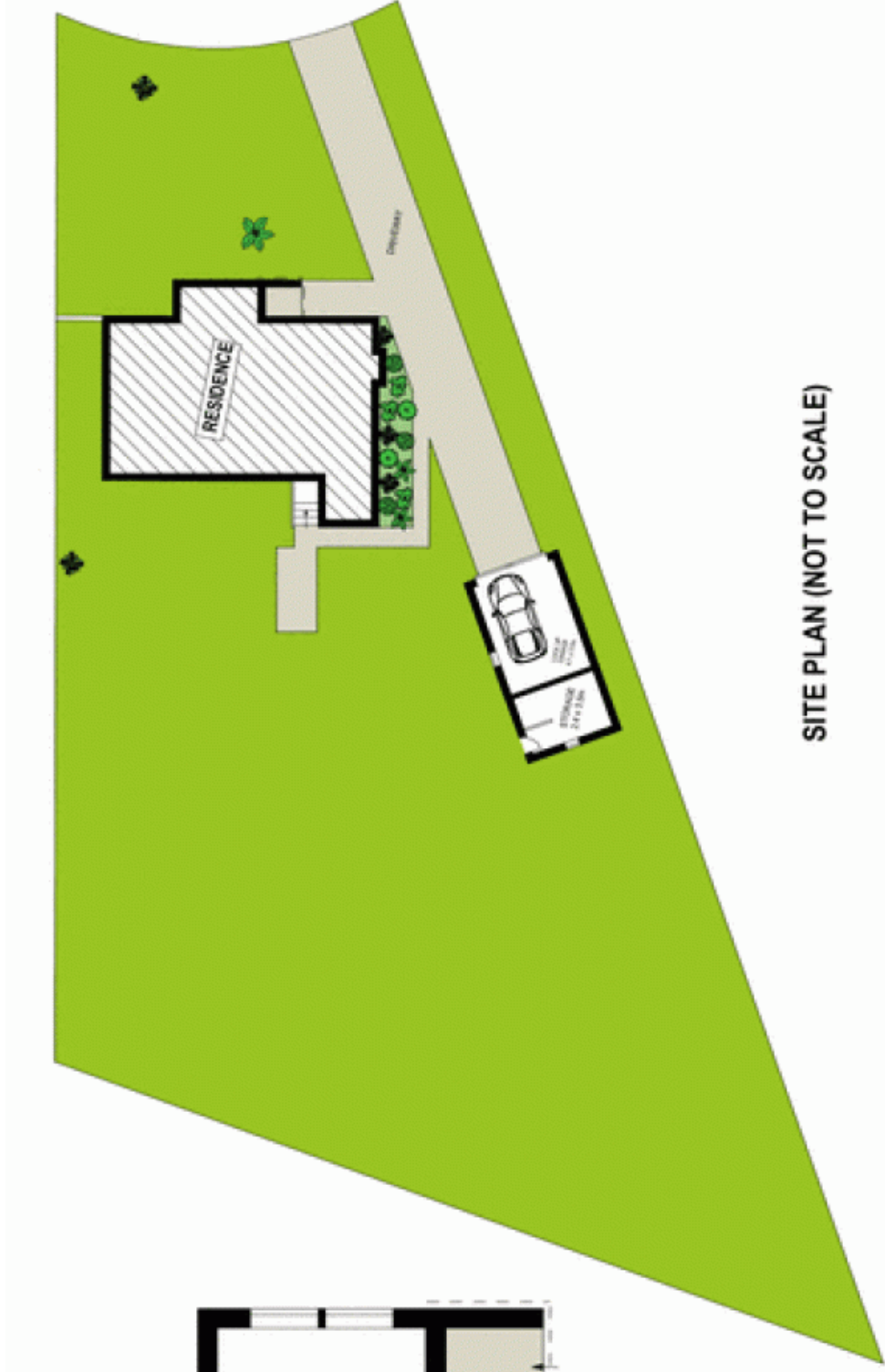
Price guide on request

Stone Manly

02 8962 2200



GROUND FLOOR



SITE PLAN (NOT TO SCALE)



res. Indicative only. Dimensions are approximate. All information contained herein is gathered from sources we believe to be reliable. However we cannot guarantee its accuracy and interested persons should rely on their own enquiries.