



15/1 Lauderdale Avenue FAIRLIGHT, NSW



Spacious apartment with superior harbour views

Capturing extraordinary views from virtually every room, this 234sqm fourth floor apartment is brimming with potential to further capitalise, while the building is set amidst impeccable grounds with direct access to Manly via the harbourfront.

- One of the area's most scenic and sought-after addresses
- Footsteps from Fairlight's ocean pool and sandy beach
- Generous living area featuring large picture windows
- Enormous wraparound undercover balcony for entertaining
- Outlook captures headlands and vast expanse of the harbour
- Two of the bedrooms have built-ins, all three enjoy views
- Master bedroom shares balcony access and has an ensuite
- User-friendly kitchen fitted with all desired appliances

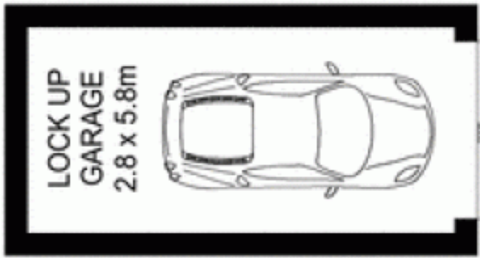
Price:

Price guide over \$1,700,000



Tim Mumford

0421 942 693



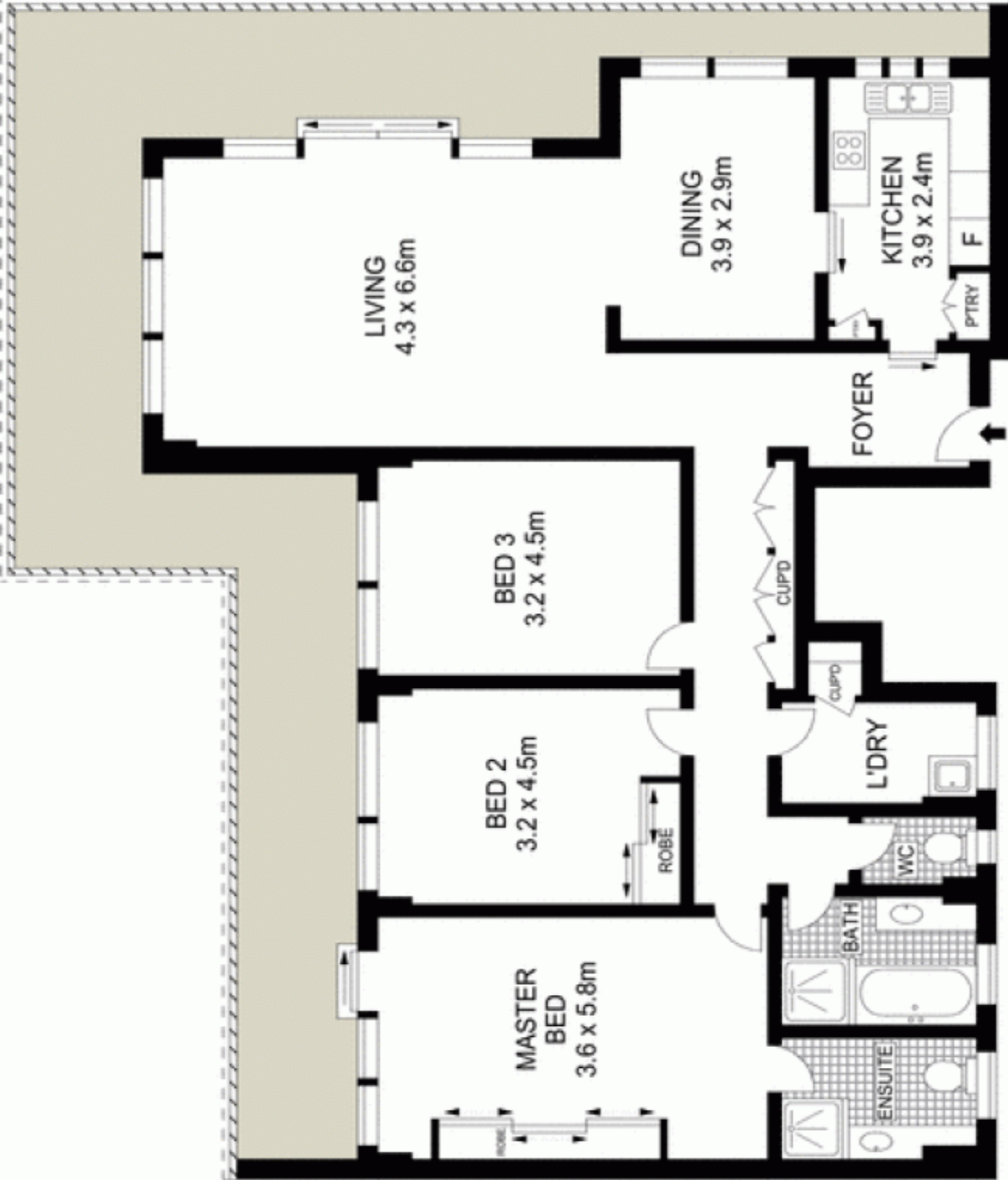
GROUND FLOOR



Scale in metres. Indicative only. Dimensions are approximate. All information contained herein is gathered from sources we believe to be reliable. However we cannot guarantee its accuracy and interested persons should rely on their own enquiries.



FOURTH FLOOR



15/1 Lauderdale Avenue, Fairlight

McGrath