

3/6 Pacific Street MANLY, NSW 2 2 1

Garden level apartment, footsteps from the beach

Enviably positioned on the garden level of the 'Shearwater' beachside apartment complex, this sophisticated apartment offers a generous 130sqm of in/outdoor living space. The wonderfully quiet and private residence is mere footsteps from the sand and surf.

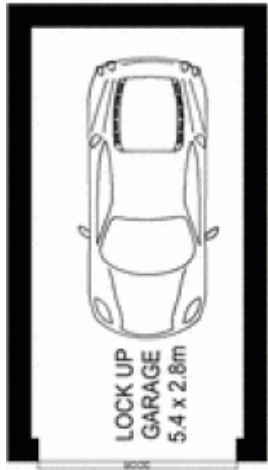
- Directly accessible to cuisine options, short walk to ferry
- A superbly maintained, full brick security building
- Well proportioned living/dining area, fresh neutral tones
- Choice of alfresco courtyards includes one off the master
- Modern gourmet gas kitchen with CaesarStone benchtops
- Both of the bedrooms are equipped with built-in robes
- Sleek tiled bathrooms include a full ensuite to the master
- Gas heating, dedicated internal laundry, lock-up garage

Price: Price guide over \$825,000

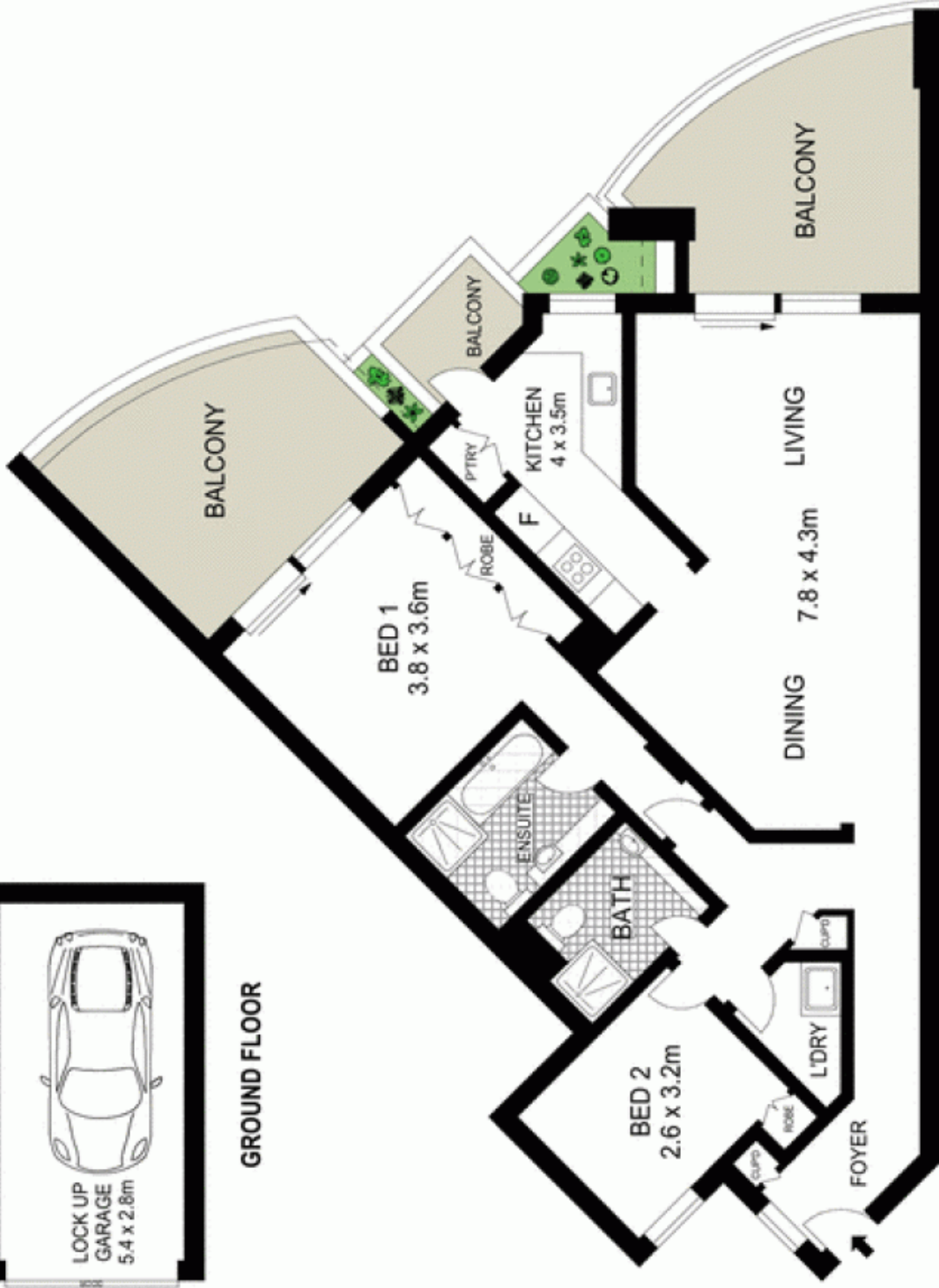


Candice Cattell

0417 311 777



GROUND FLOOR



GROUND FLOOR



Scale in metres. Indicative only. Dimensions are approximate. All information contained herein is gathered from sources we believe to be reliable. However we cannot guarantee its accuracy and interested persons should rely on their own enquiries.

3/6 Pacific Street, Manly

McGrath