



32/1 Lauderdale Avenue FAIRLIGHT, NSW



Elite harbourfront apartment with stunning views

Holding pride of place at the head of the harbour, the iconic 'One Lauderdale' is renowned for its extraordinary proportions and exclusive harbourfront setting. From its eighth floor vantage point, it captures magical harbour views and the northerly sun.

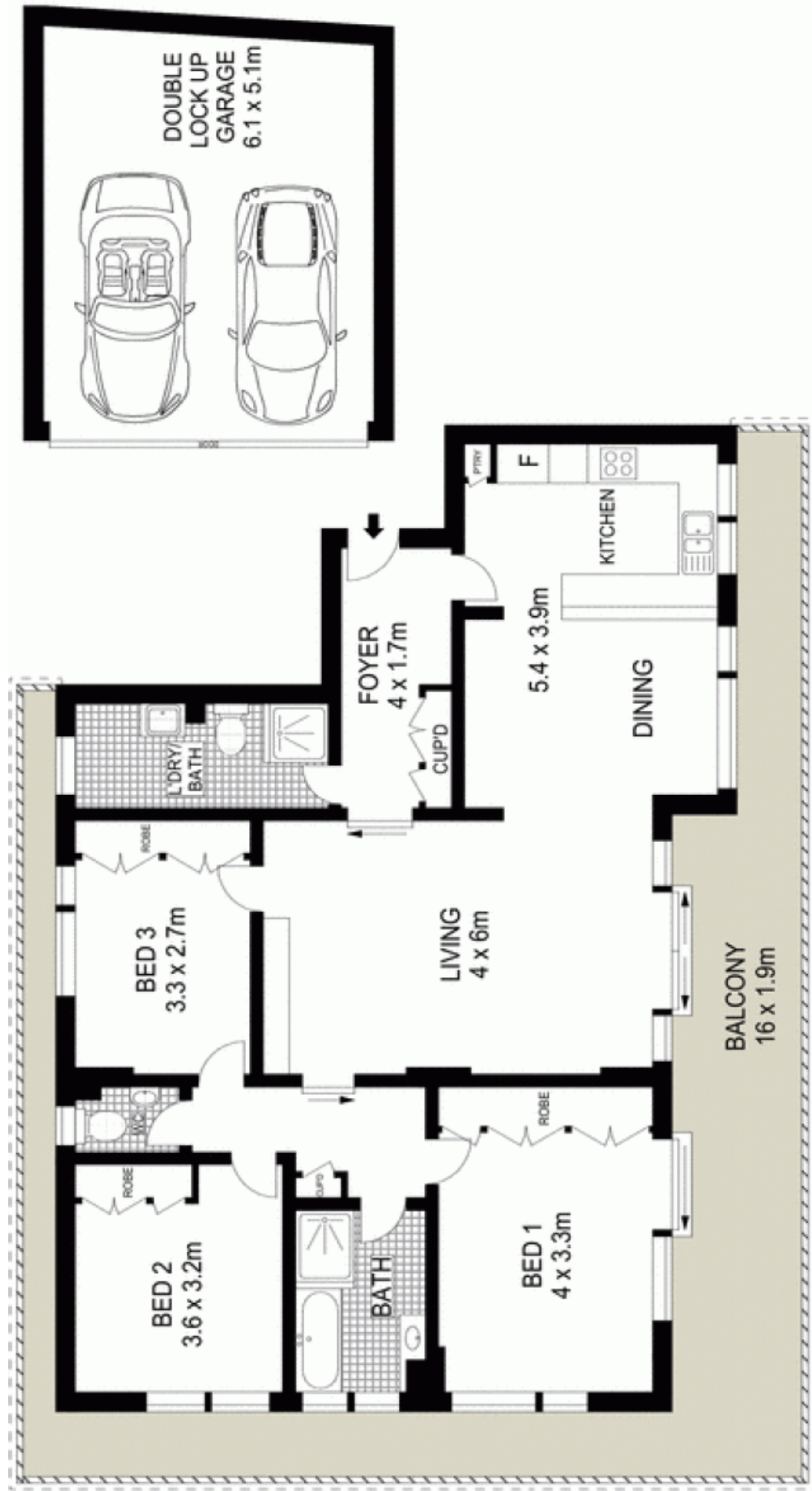
Gaze over Fairlight Beach to yacht sprinkled North Harbour Views to Forty Baskets, Reef Beach and Eastern Suburbs Metres to Fairlight Beach, short harbourside stroll to Manly 210sqm on title, immaculate security building, lift access Enormous glass wrapped living space, separate dining area Seamless flow to a giant wraparound entertainers' balcony Sleek new Corian kitchen with quality European appliances Master bedroom opens balcony, spotless original bathrooms Placed amid park-like grounds, direct access to harbour walk Double lock-up garage, scope to express your creative flair

Price:

Price guide over \$1,100,000

Stone Manly

02 8962 2200



EIGHTH FLOOR



Scale in metres. Indicative only. Dimensions are approximate. All information contained herein is gathered from sources we believe to be reliable. However we cannot guarantee its accuracy and interested persons should rely on their own enquiries.

32/1 Lauderdale Avenue, Fairlight

McGrath