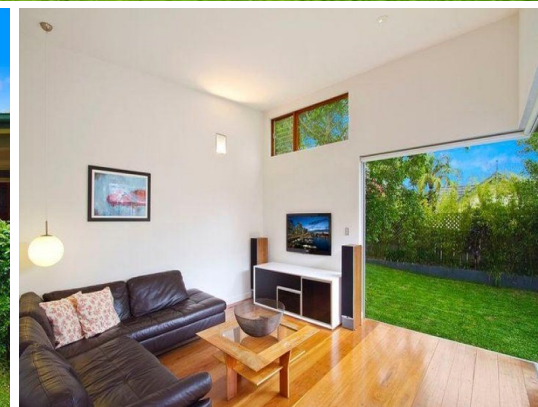


STONE



19 Cohen Street FAIRLIGHT, NSW

3 

1 

1 

### Single level haven of privacy and convenience

This semi offers a superb in/outdoor lifestyle in a highly convenient address, 'The Manor' is a beautifully updated single level haven. It is ideally located in a peaceful, child-friendly setting with direct access to city buses and an easy walk to Manly Beach.

- Well suited to young families, executives and downsizers
- The first home built on this wonderfully secure street
- Modern inclusions throughout, nothing further to spend
- Great natural light, scope to add an extra level (STCA)
- Open plan with wide timber floors, soaring angled ceilings
- Bi-folds and sliding doors provide in/outdoor integration
- Sunlit deck and level lawn bordered by easycare garden
- Gourmet gas kitchen, stainless steel appliances, built-in speakers

**Price:**

Price guide over \$1,070,000

**Stone Manly**

02 8962 2200



**SITE PLAN (NOT TO SCALE)**



**GROUND FLOOR**



Scale in metres. Indicative only. Dimensions are approximates. All information contained herein is gathered from sources we believe to be reliable. However we cannot guarantee its accuracy and interested persons should rely on their own enquiries.

