

19 Fishbourne Road ALLAMBIE HEIGHTS, NSW

3

2

2

### Stylish family home on a pristine garden paradise

Nestled in a parkside slip cul-de-sac in a prized central location, this immaculate full brick residence is an idyllic family haven. Set on private level lawns and enchanting landscaped gardens, it is only a couple of minutes stroll to Warringah Mall.

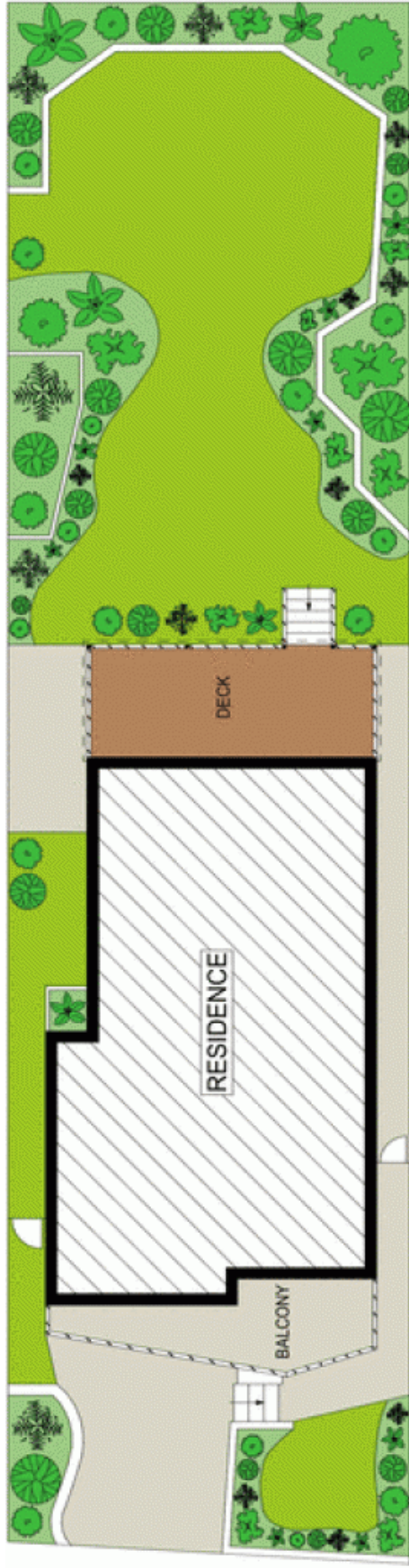
- Peacefully set on a 455sqm tranquil child-safe garden oasis
- Situated at the base of Allambie, easy stroll to mall
- Metres to buses and golf course, moments to beaches
- Generous living space flows to sun bathed northerly balcony
- Formal dining area with timber flooring and high ceilings
- Covered entertainers' deck overlooks tranquil garden setting
- Modern polyurethane kitchen with gas cooktop and dishwasher
- Three double bedrooms all open outdoors, main with built-ins

Price:

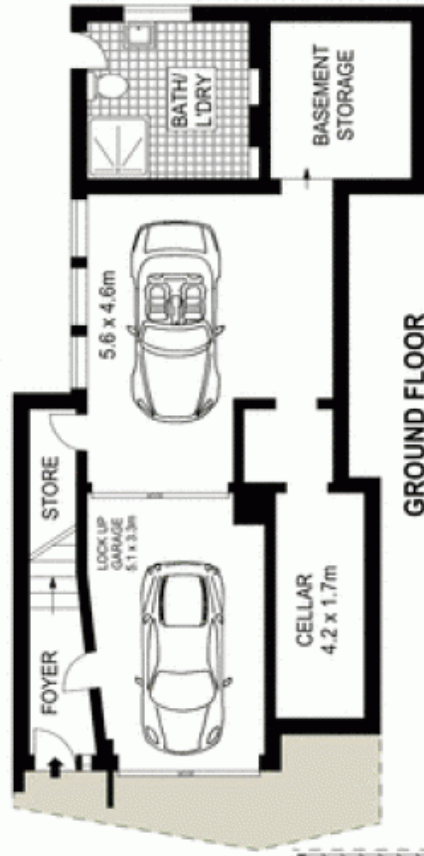
Price guide on request

**Stone Manly**

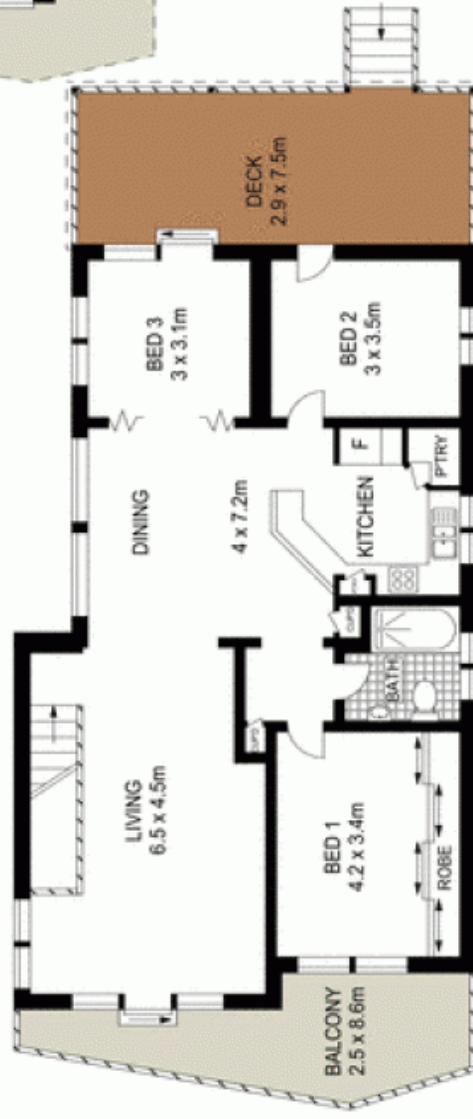
02 8962 2200



SITE PLAN (NOT TO SCALE)



GROUND FLOOR



ENTRY FLOOR



Scale in metres. Indicative only. Dimensions are approximates. All information contained herein is gathered from sources we believe to be reliable. However we cannot guarantee its accuracy and interested persons should rely on their own enquiries.

19 Fishbourne Road, Allambie Heights

McGrath