



53 Beatrice Street BALGOWLAH HEIGHTS, NSW



Promising family home in a terrific location

Set on a generous 697sqm in a fabulous location bordering Clontarf, this original double brick family home presents a variety of options for buyers. Though liveable as is, the property is brimming with potential to renew or rebuild a contemporary haven.

- Positioned on a terrific street showcasing many new homes
- Direct access to city buses, Balgowlah Heights Public School
- Choice of living areas includes one with timber floors
- Wonderfully versatile floorplan to accommodate many demands
- Level lawns featured at both the front and the rear
- Entertaining deck capturing water and city glimpses
- Workshop and plenty of storage space on lower level
- Full main bathroom with a separate bath and shower

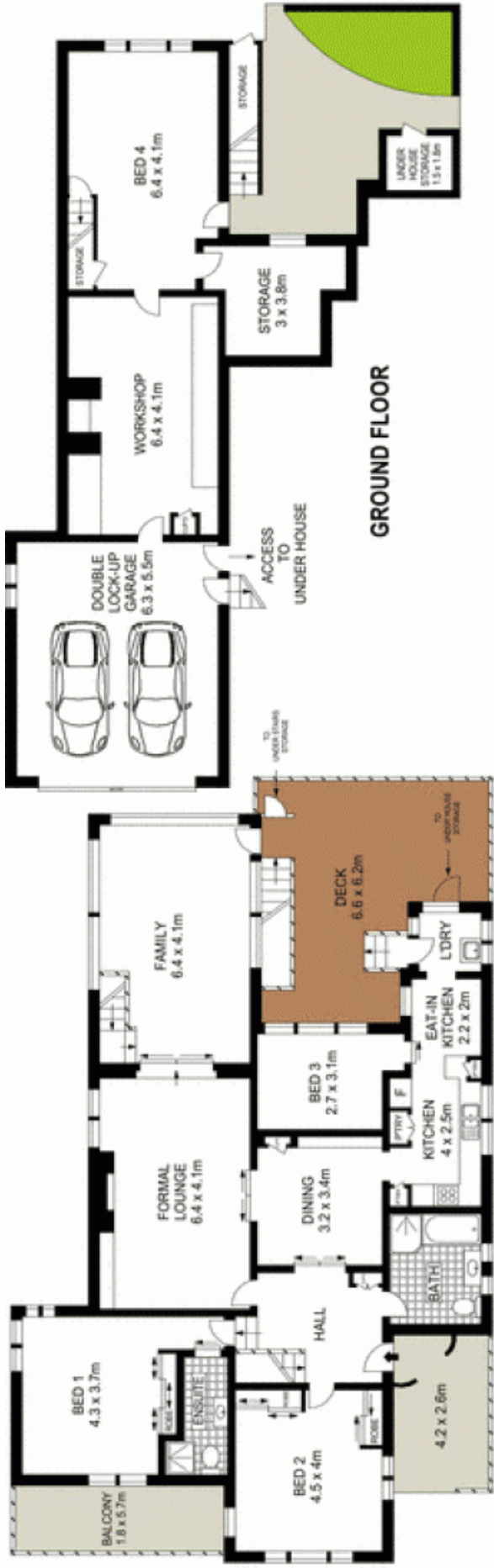
Price:

Price guide over \$1,250,000



Candice Cattell

0417 311 777



SITE PLAN (NOT TO SCALE)



Scale in metres. Indicative only. Dimensions are approximate. All information contained herein is gathered from sources we believe to be reliable. However we cannot guarantee its accuracy and interested persons should rely on their own enquiries.

53 Beatrice Street, Balgowlah Heights

McGrath