



6/30 Eurobin Avenue MANLY, NSW

2

1

1

Sunlit top floor apartment in a superb locale

Newly refreshed and offering a coveted northerly aspect, this top floor apartment is an exceptional lifestyle prospect. The residence is set directly opposite Lagoon Park with Keirlie Park at the end of the street and just a brief level stroll to the surf.

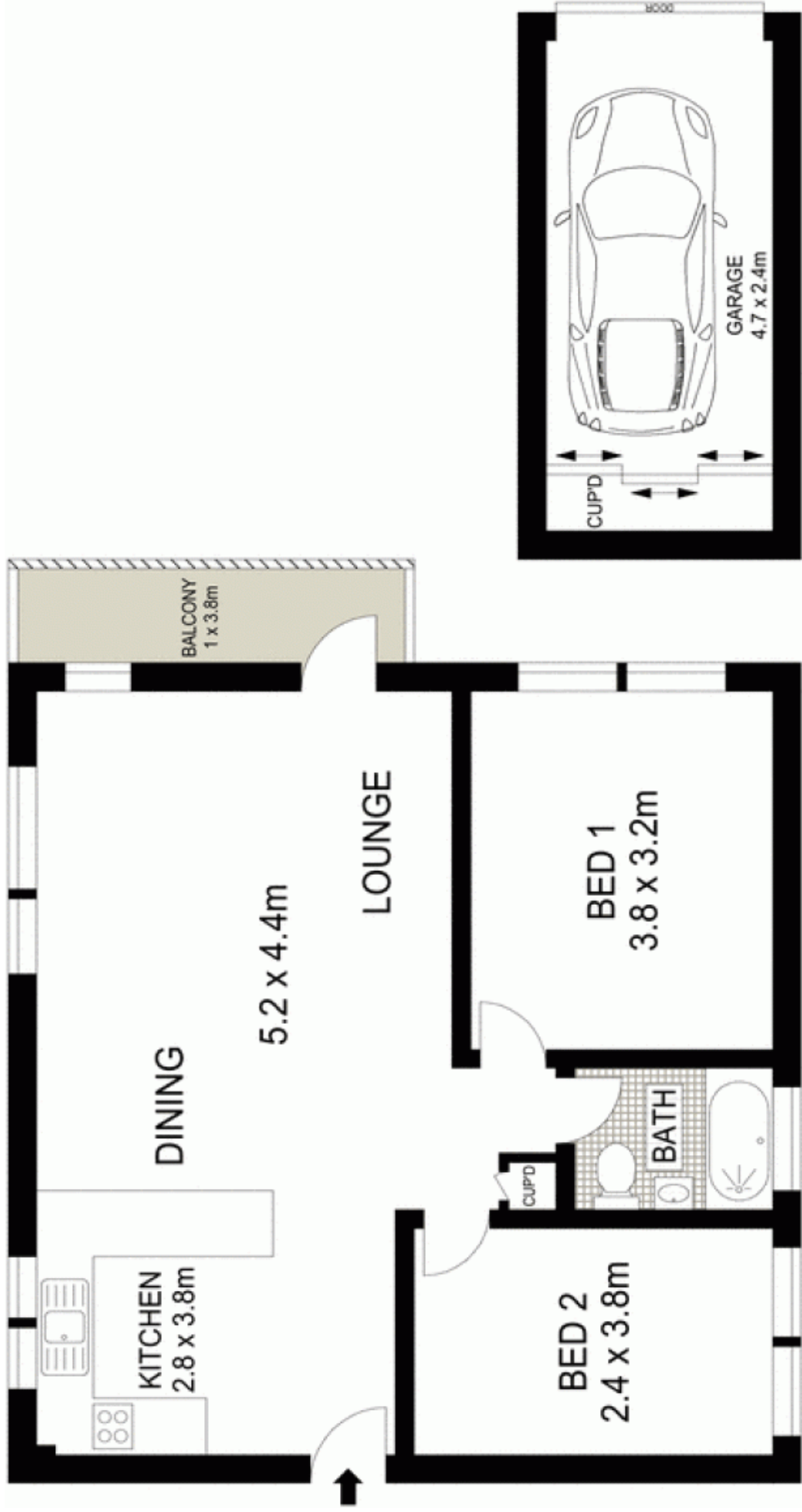
- Small boutique complex comprising just six properties
- Generous open plan living and dining area
- Dine Alfresco, balcony captures an abundance of sunshine
- Interiors recently painted and carpeted throughout
- User-friendly kitchen, bathroom has combined bath/shower
- Single lock-up garage plus common laundry and storage
- Full brick building set amid well maintained grounds
- Well suited to a professional couple or astute investor

Price:

Price guide over \$590,000

Stone Manly

02 8962 2200

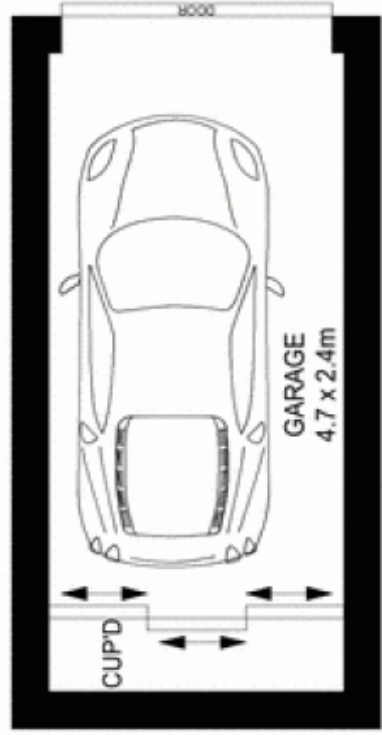


TOP LEVEL



Scale in metres. Indicative only. Dimensions are approximate. All information contained herein is gathered from sources we believe to be reliable. However we cannot guarantee its accuracy and interested persons should rely on their own enquiries.

STREET LEVEL



6/30 Eurobin Avenue, Manly

McGrath