



10/35 East Esplanade MANLY, NSW

1 1 1

Original apartment in premier lifestyle address

Enjoying an exceptionally desirable address adjacent to Manly Cove, this original third floor apartment provides direct access to the area's numerous amenities. The residence captures harbour views and is set on the northern side of a full brick building.

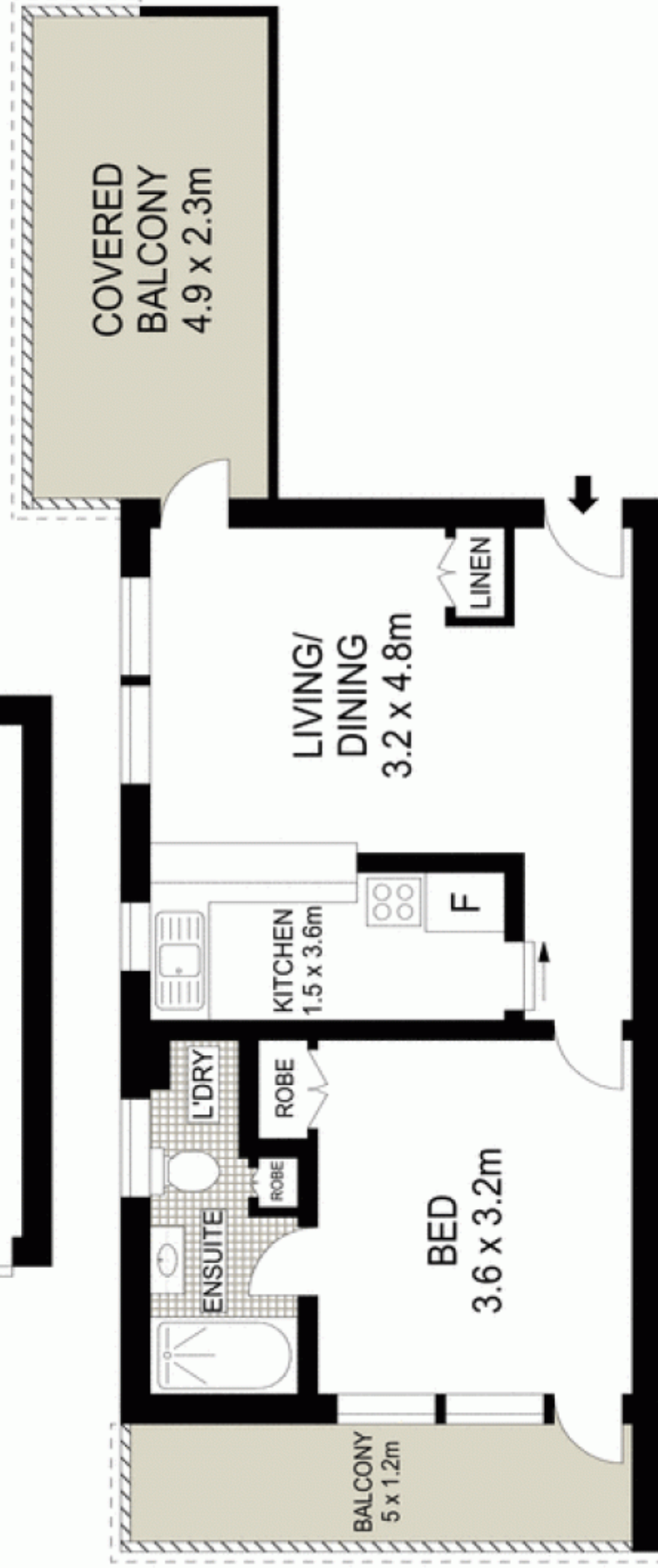
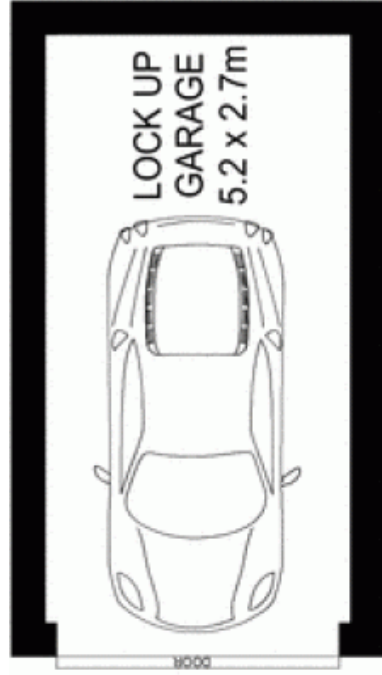
- Footsteps from fine cuisine, shops, nightlife and the ferry
- Set back from the street, superb traffic noise protection
- Two undercover entertaining balconies are offered
- A blank canvas allowing ample scope to update
- Well proportioned living and dining area flows outside
- Double sized bedroom equipped with built-in wardrobe
- Tidy bathroom includes internal laundry connections
- Lift access, voice intercom security and a lock-up garage

Price: Price guide over \$535,000



Adam Moore

0428 319 096



THIRD FLOOR



Scale in metres. Indicative only. Dimensions are approximate. All information contained herein is gathered from sources we believe to be reliable. However we cannot guarantee its accuracy and interested persons should rely on their own enquiries.



McGrath

10/35 East Esplanade, Manly