



43/2 Darley Road MANLY, NSW



Spacious studio of style and convenience

Centrally located yet superbly quiet, this spaciouly sized studio apartment enjoys direct access to Manly's vibrant heart. Cafes, restaurants, ferries and the beach can all be found within mere metres of the property's sleek, modern complex.

- Well presented interiors feature quality appointments
- Open layout capturing plenty of natural light throughout
- Full length glass doors allow seamless in/outdoor flow
- Wide-fronted balcony is perfect for entertaining guests
- Entirely open kitchen showcasing attractive marble benchtops
- Kitchen also offers Smeg appliances and a concealed laundry
- Elevated position in the secure 'Concorde' development
- Lift access directly to an oversized security car space

Price:

Price guide over \$395,000

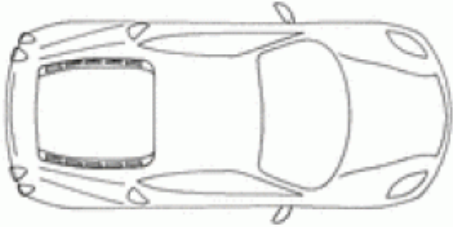


Candice Cattell

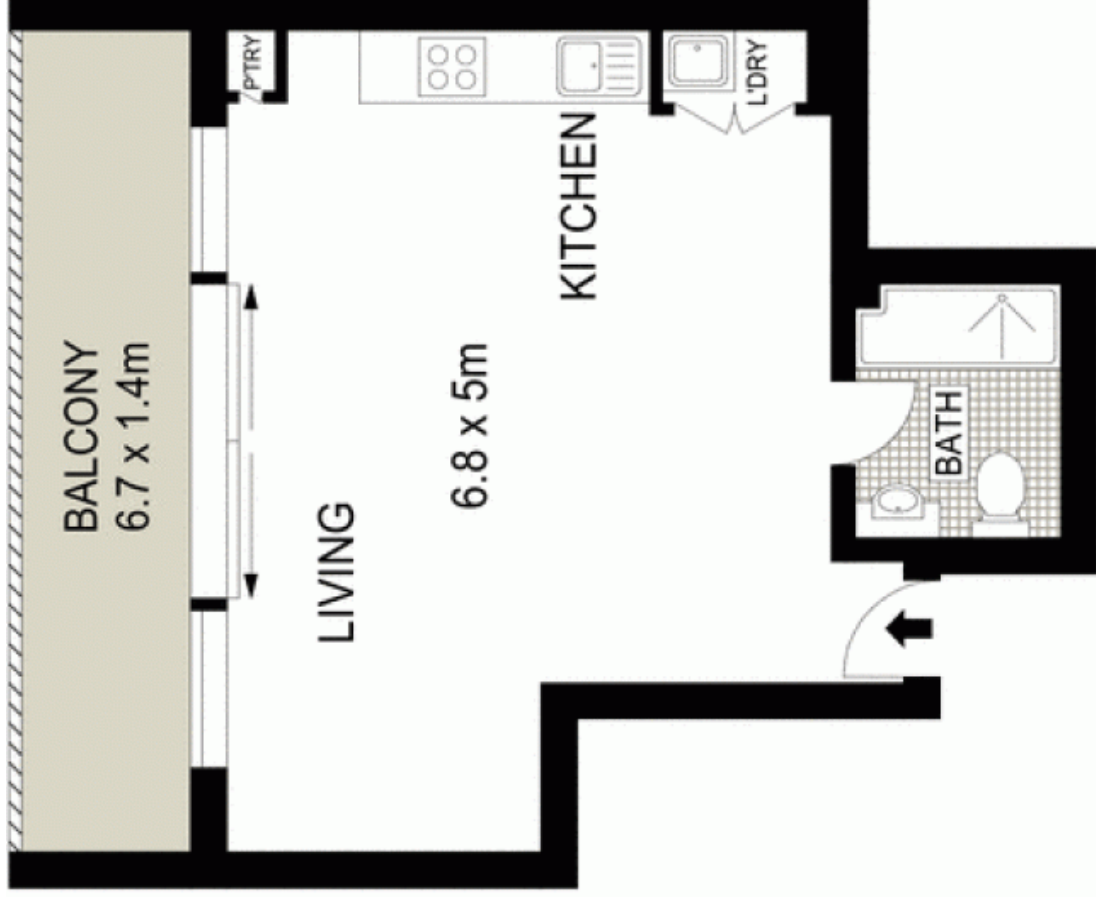
0417 311 777

STORAGE

SECURITY
CAR SPACE
3.7 x 5.7m



LEVEL B1



LEVEL TWO (BUILDING B)



0 1 2 3 4 5



Scale in metres. Indicative only. Dimensions are approximate. All information contained herein is gathered from sources we believe to be reliable. However we cannot guarantee its accuracy and interested persons should rely on their own enquiries.

43/4-8 Darley Road, Manly

McGrath