



12 Crescent Street FAIRLIGHT, NSW

3 

1 

Sumptuous c1906 semi reinvented for modern living

Beyond an elaborate timber panelled facade lies a superbly appointed residence that has been opened up to provide a light filled haven of space, style and privacy. Placed on 315sqm of private level lawns, it is nestled in a premier wide tree-lined street.

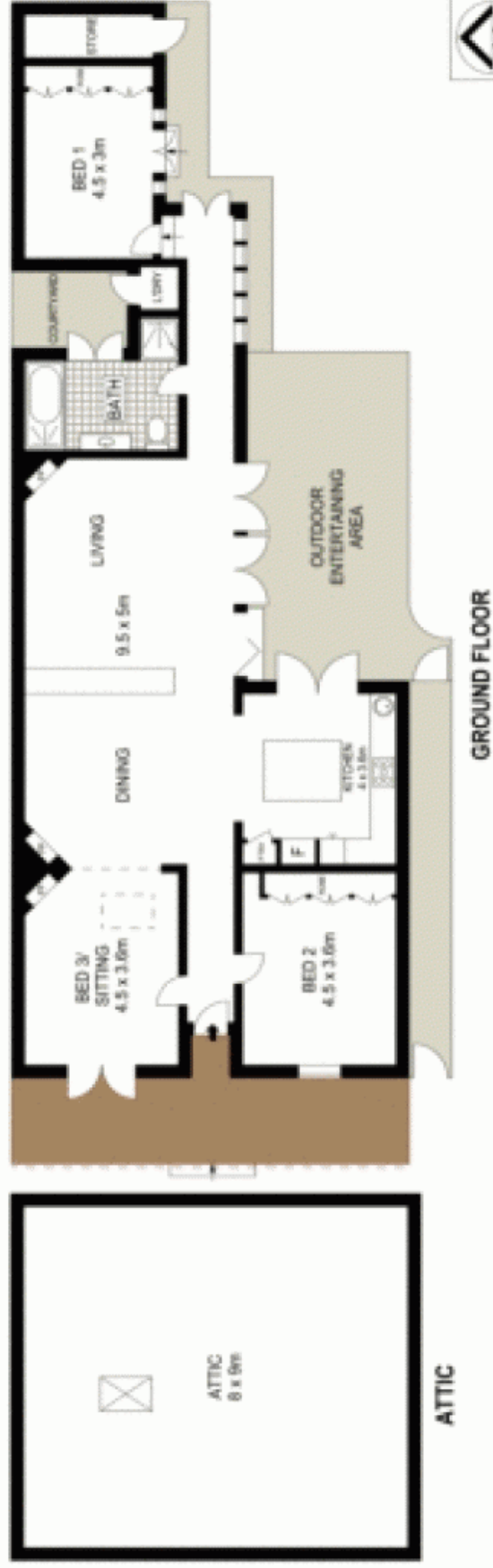
- Set on Manly's border within walking distance of the beach
- Minute's stroll to Fairlight shops and wharf and city buses
- Double-fronted c1906 semi with broad timber posted verandah
- Central hall, high ceilings, wide kauri pine floorboards
- Sweeping open plan living space with separate dining area
- Three double hinged glass French doors open out to the lawn
- Sleek island kitchen, stainless steel benches and dishwasher
- Oversize bedrooms, third bedroom or lounge opens to verandah

Price:

Price guide on request

Stone Manly

02 8962 2200



12 Crescent Street, Fairlight

McGrath