



33 Griffiths Street FAIRLIGHT, NSW

3

2

1

Transformed character semi with beautiful gardens

Restored with integrity and styled with flair, this dual level c1920's semi provides an idyllic haven for young families and a dynamic venue for entertaining. Placed on exquisite landscaped gardens, it is footsteps to school and buses to the city or wharf.

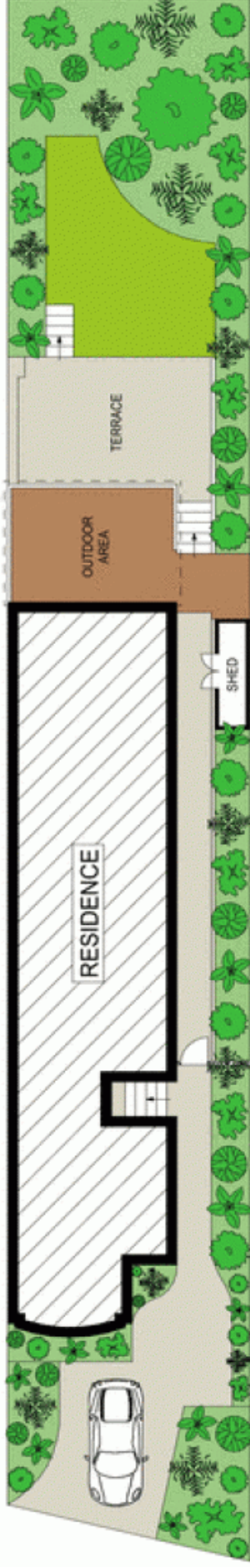
- Blue brick semi on sandstone base with white picket fence
- High patterned ceilings, leadlight windows, timber flooring
- Formal living room, bright casual living and dining area
- Wide bi-fold doors flow to large covered entertainers' deck
- Stylish timber island kitchen with gas stove and dishwasher
- Main bedroom with built-ins adjoins northerly sunroom
- Ultra-contemporary bathrooms, 'hot and cold' outdoor shower
- Barbecue patio and level lawn, private established gardens

Price:

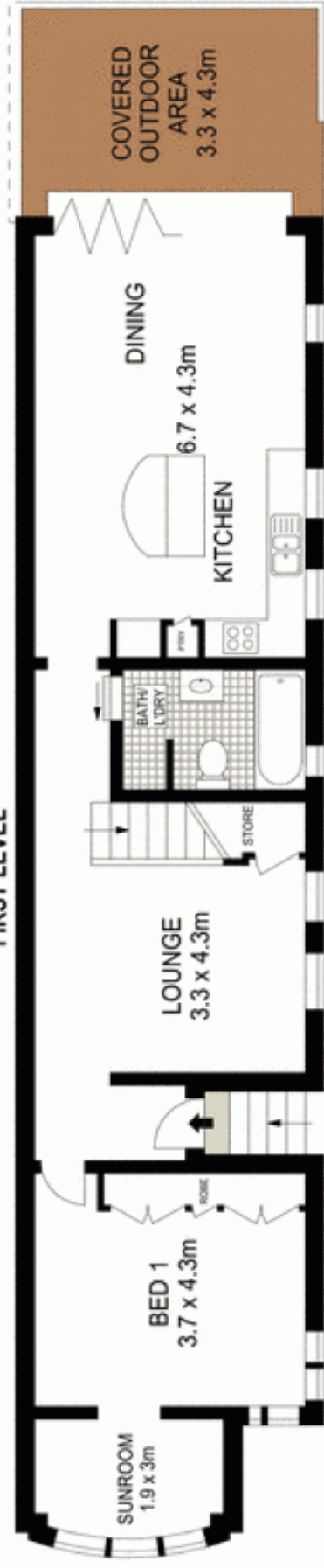
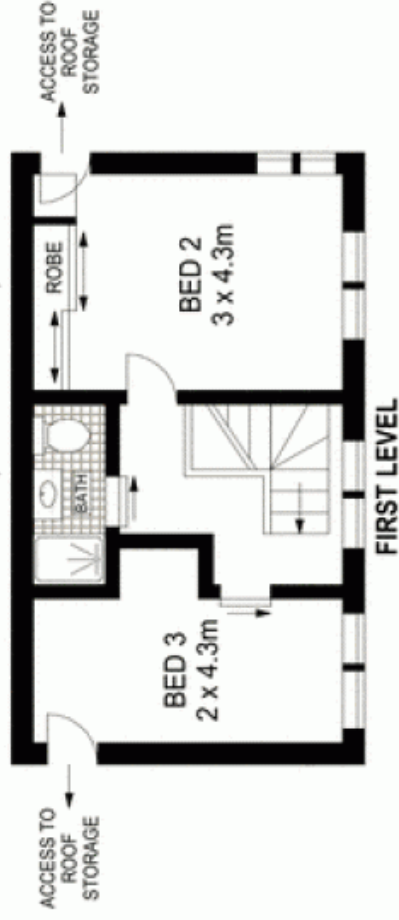
Price guide over \$1,150,000

Stone Manly

02 8962 2200



SITE PLAN (NOT TO SCALE)



Scale in metres. Indicative only. Dimensions are approximate. All information contained herein is gathered from sources we believe to be reliable. However we cannot guarantee its accuracy and interested persons should rely on their own enquiries.

33 Griffiths Street, Fairlight

McGrath