

54 Kentwell Road ALLAMBIE HEIGHTS, NSW

3 1 1

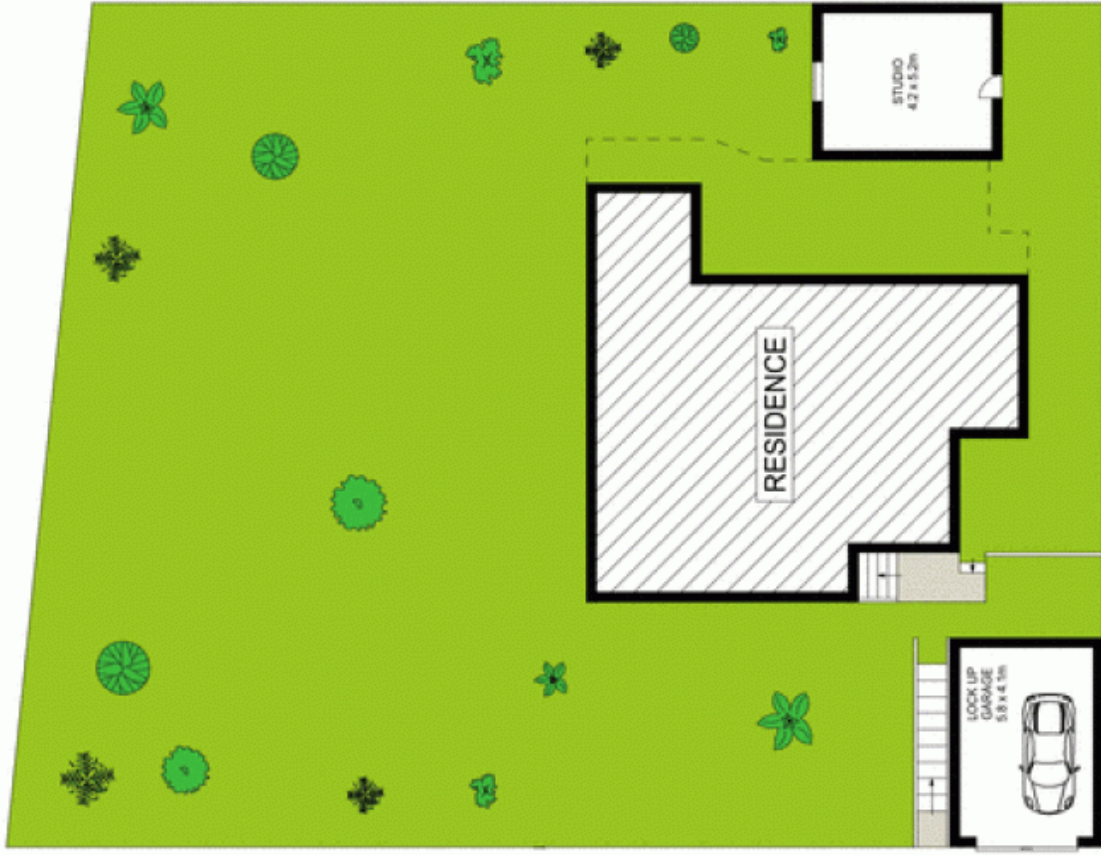
Original home on an expansive north facing parcel

Positioned on a significant 829sqm block with substantial street frontage, this original home presents a number of options to the discerning buyer. It faces due north to the rear and is located within moments stroll to local shops and transport.

- Ideal for young families seeking an entry point for the area
- Liveable as is and brimming with potential to update
- Rebuild (STCA) or refurbish and create a contemporary oasis
- Good sized living and dining, three bedrooms on one level
- Large grassed lawn plus a rear courtyard and studio/workshop
- Original bathroom provides combined bath and shower
- Ideal scenario to build a freestanding granny flat (STCA)
- Utilities for extra accommodation are already in place

Price: Price guide over \$800,000

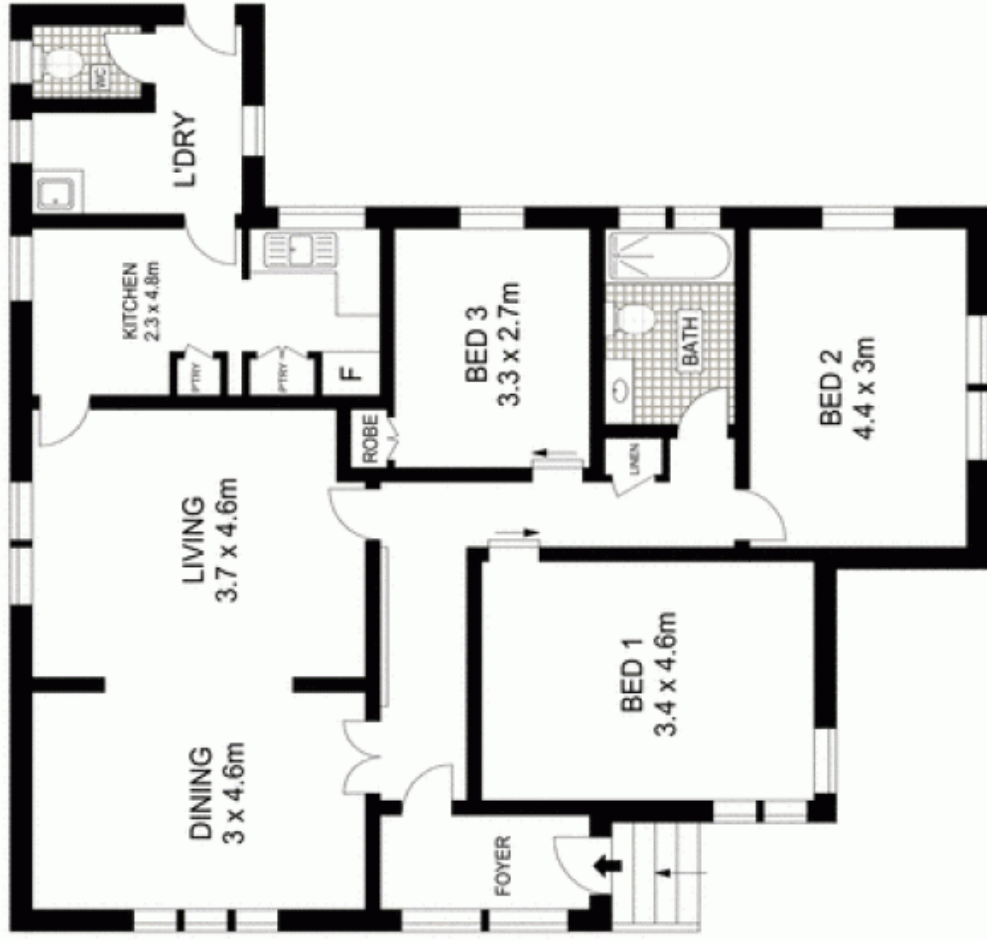
Stone Manly
02 8962 2200



SITE PLAN (NOT TO SCALE)



Scale in metres. Indicative only. Dimensions are approximations. All information contained herein is gathered from sources we believe to be reliable. However we cannot guarantee its accuracy and interested persons should rely on their own enquiries.



GROUND FLOOR



54 Kentwell Road, Allambie Heights

McGrath