



302/61 Osborne Road MANLY, NSW

2

1

1

Eastern Hill pad with breathtaking harbour views

From an elevated vantage point on Manly's exclusive Eastern Hill, this bright and airy apartment enjoys panoramic views that sweep the length of the harbour to the city. Add your finishing touches and live it up in an exclusive harbourside cul-de-sac.

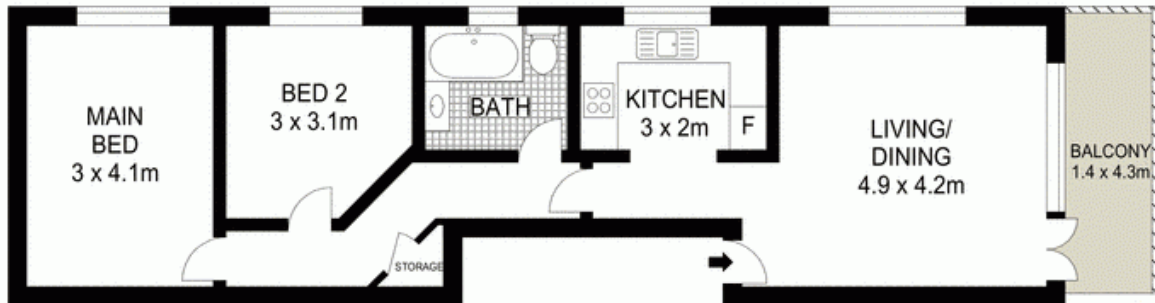
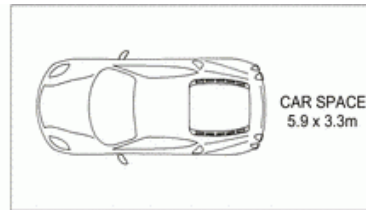
- Gaze down the length of the harbour to the Eastern Suburbs
- Views from yacht sprinkled North Harbour to the city skyline
- Premier Eastern Hill address, stroll to Little Manly Beach
- Stone's throw to Manly village, beaches, eateries and wharf
- Placed on the top floor of an immaculate block of only 12
- Generous living and dining spaces soaks in the harbour views
- Easy flow to a fabulous habourside entertainers' balcony
- Original kitchen and bathroom await your creative touch

Price:

Price guide over \$800,000

Stone Manly

02 8962 2200



TOP FLOOR



Scale in metres. Indicative only. Dimensions are approximate. All information contained herein is gathered from sources we believe to be reliable. However we cannot guarantee its accuracy and interested persons should rely on their own enquiries.



302/61 Osborne Road, Manly

McGrath

INT : 63m²
EXT : 25m²