

Location Shot

10/6 Fairway Close MANLY VALE, NSW      2     1     1 

### Top floor apartment in a central lifestyle address

Peacefully neighbouring onto Fairway Reserve in a private cul-de-sac, this top floor apartment enjoys a northern aspect and coastal lifestyle. It allows easy access to a choice of beaches and is walking distance to supermarkets or express bus services.

- Fantastic location close to Keirle Park and Manly Lagoon
- Quiet interiors feature combined living and dining spaces
- North facing alfresco terrace, second terrace off kitchen
- Functional gas equipped kitchen, brimming with potential
- Sunny double bedrooms with built-in wardrobes and terraces
- Spacious modern bathroom plus internal laundry facilities
- Comfortable year-round with air conditioning, gas outlets
- Single carport, leafy child-friendly park next door

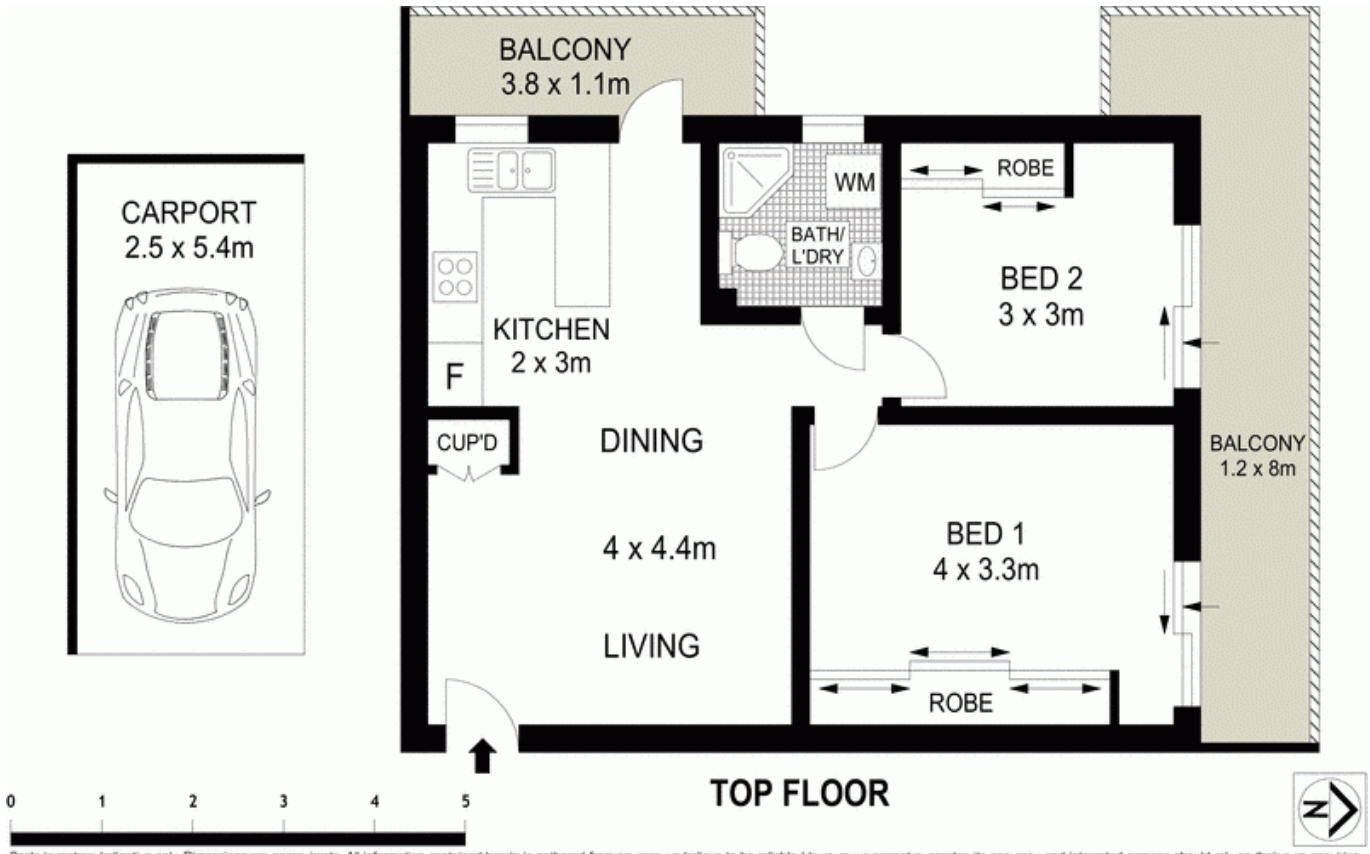
Price:

Price guide over \$465,000



**Candice Cattell**

0417 311 777



**TOP FLOOR**

Scale in metres. Indicative only. Dimensions are approximate. All information contained herein is gathered from sources we believe to be reliable. However we cannot guarantee its accuracy and interested persons should rely on their own enquiries.

10/6 Fairway Close, Manly Vale

**McGrath**