



318/11 Wentworth Street MANLY, NSW

1 1 1

Sleek executive pad in the centre of the village

Immersed in the cosmopolitan heart of Manly town centre, this ultra-modern security apartment is an idyllic lifestyle pad or investment. Blessed with abundant space and resort-like facilities, it is perfectly located just footsteps from the beach or wharf.

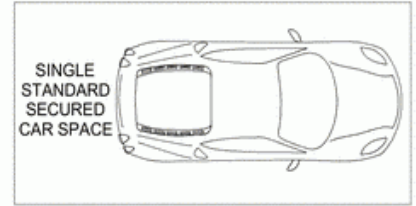
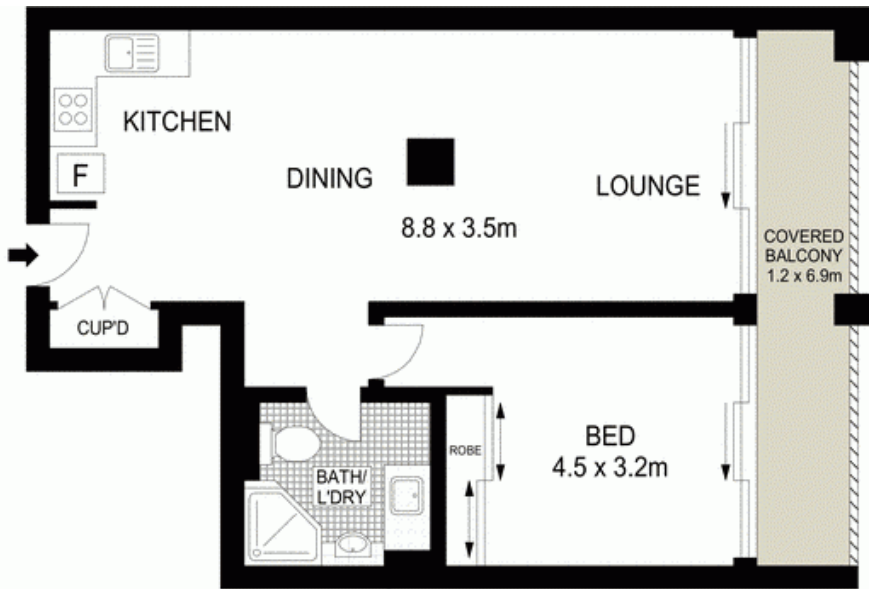
- 'The Peninsula' is only 300m from world-famous Manly Beach
- Supermarket, shops and cosmopolitan eateries at the doorstep
- Quietly recessed from street, third floor with lift access
- Generous light filled living space with separate dining area
- Sliding glass doors open to extra-wide entertainers' balcony
- Sleek open plan granite kitchen with quality Smeg appliances
- Double bedroom with mirrored built-ins opens to balcony
- Chic granite and polyurethane bathroom, internal laundry

Price: Price guide over \$590,000



Adam Moore

0428 319 096



BASEMENT



Scale in metres. Indicative only. Dimensions are approximate. All information contained herein is gathered from sources we believe to be reliable. However we cannot guarantee its accuracy and interested persons should rely on their own enquiries.



318/11 Wentworth Street, Manly

McGrath