

115 Bay Street MOSMAN, NSW

3

2

2

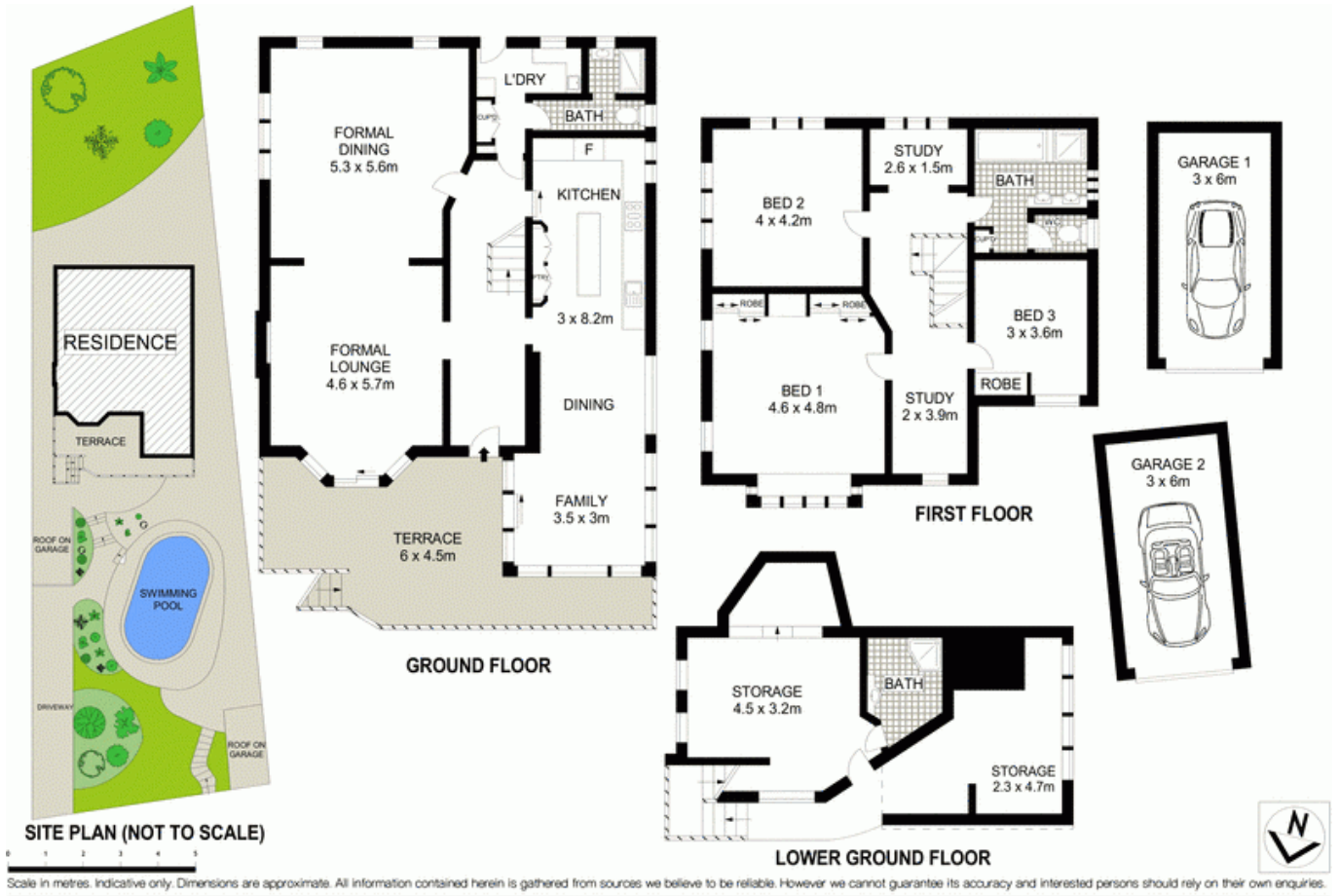
North facing family home with stunning views

Set in a commanding position overlooking Middle Harbour, this impressive north facing family home with sundrenched in-ground swimming pool offers a generous amount of accommodation in a quiet and private setting.

- Set on a generous 866sqm of land with breathtaking water views
- Grand formal dining and lounge flow onto entertaining terrace
- Separate casual dining and living off kitchen
- Three oversized bedrooms plus two separate studies
- Copious amounts of storage and third bathroom on lower level
- Two lock-up garages plus off street parking for a further car
- Potential for downstairs self-contained area (STCA)
- Extremely well presented with scope to add personal touches

Stone Manly

02 8962 2200



115 Bay Street, Mosman

McGrath