



16/15 Laurence Street MANLY, NSW

3

2

1

### Penthouse-like apartment with stunning water views

From a lofty fifth floor setting atop the 'Caprice' building, this penthouse-like apartment reveals a spectacular harbour and ocean panorama. Bright, spacious and finished in fresh modern themes, it is only a few minutes stroll to harbour and surf beaches and Manly village.

- Gaze across the harbour to the ocean through Sydney Heads
- Views from Manly Wharf to Reef Beach and Forty Baskets Beach
- One of two on the top floor, 139sqm on title, lift access
- Generous living area with views flows to harbourside balcony
- Separate dining area with north window, sleek tiled flooring
- Modern CaesarStone kitchen with stainless steel dishwasher
- Views from every bedroom, main with ensuite and balcony
- Stylish contemporary bathrooms, separate internal laundry

Price:

Price guide over \$1,000,000

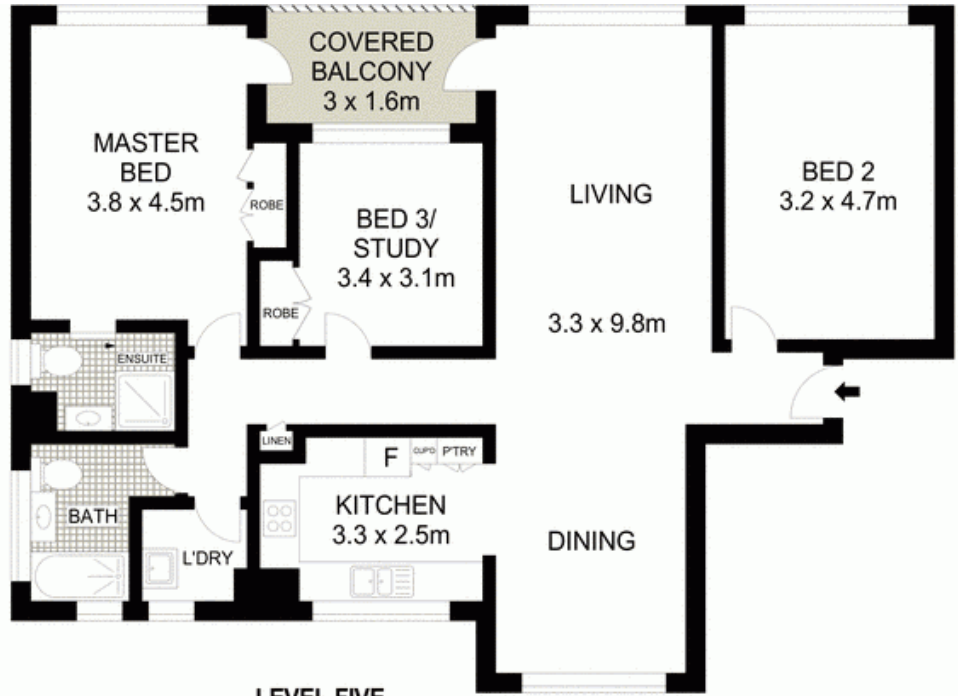


**Adam Moore**

0428 319 096



GROUND FLOOR



LEVEL FIVE



Scale in metres. Indicative only. Dimensions are approximate. All information contained herein is gathered from sources we believe to be reliable. However we cannot guarantee its accuracy and interested persons should rely on their own enquiries.



16/15 Laurence Street, Manly

**McGrath**